

This road project paid in part through the
St. Charles County ½ Cent Transportation Sales Tax.

WENTZVILLE PARKWAY SOUTH PHASE 2

Project Location:

Veterans Memorial Parkway South to Interstate Drive

Project Description/Scope:

This project will project extend Wentzville Parkway South to Interstate Drive.

Project Funding:

TOTAL \$10,000,000	County \$8,000,000	Sponsor \$2,000,000	Federal	Other
-----------------------	-----------------------	------------------------	---------	-------

Anticipated Completion Year: 2023

Sponsor & Contact:

City of Wentzville

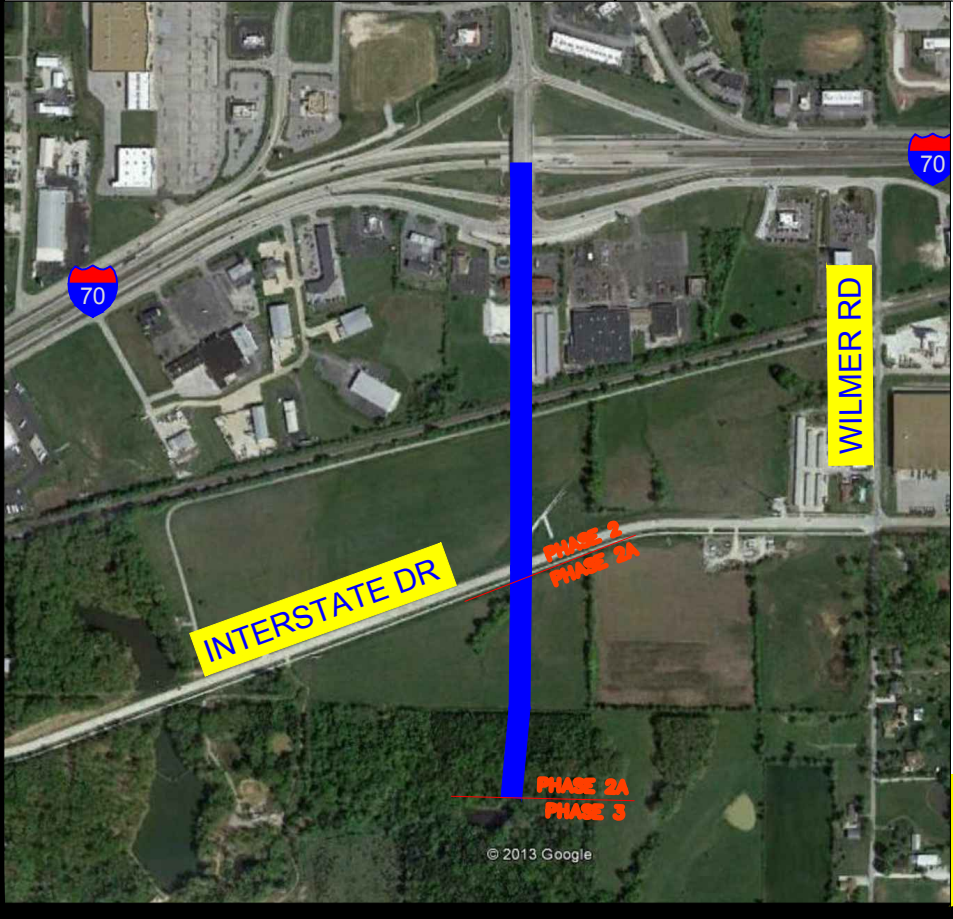
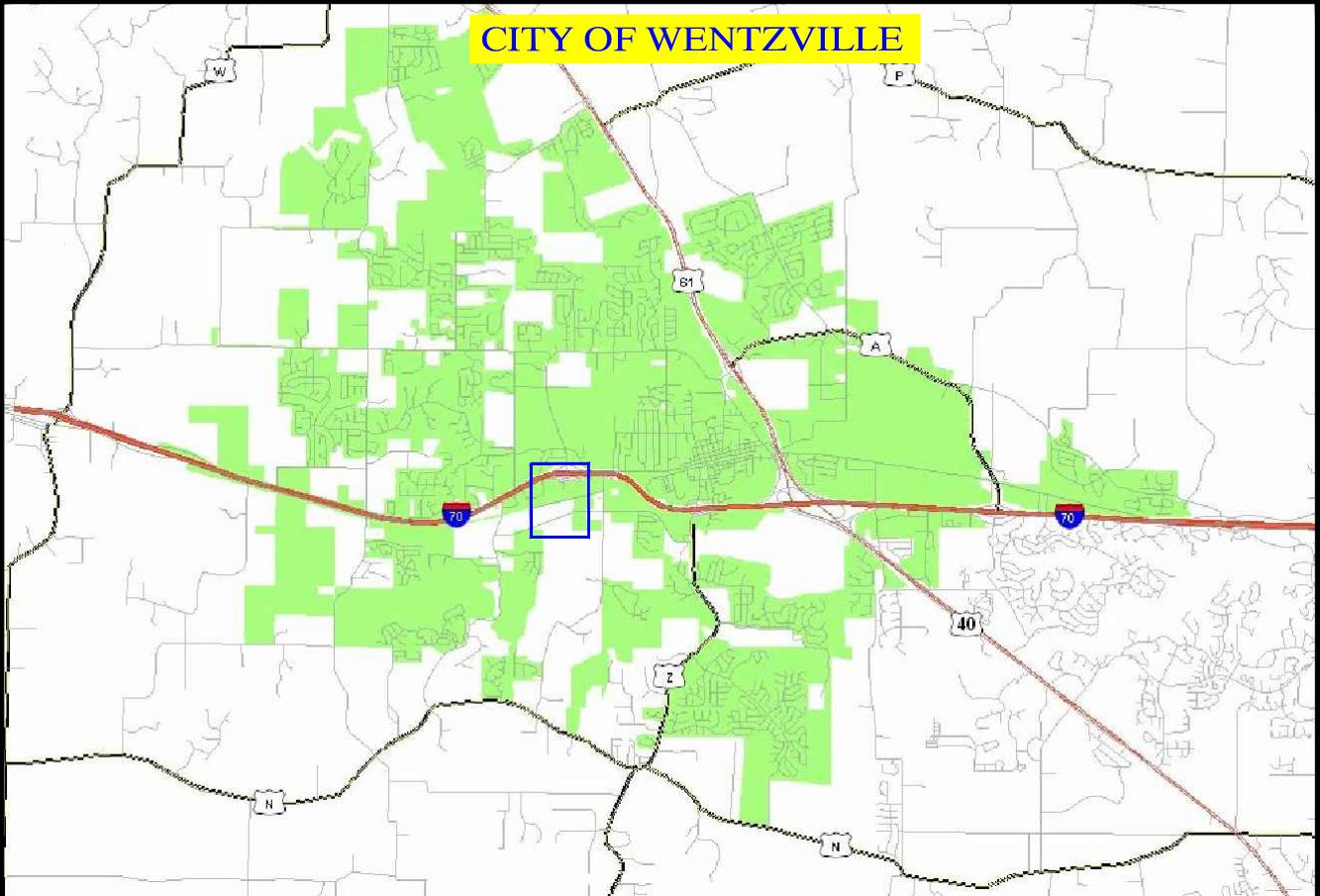
Tony Gambaro

636-639-2053

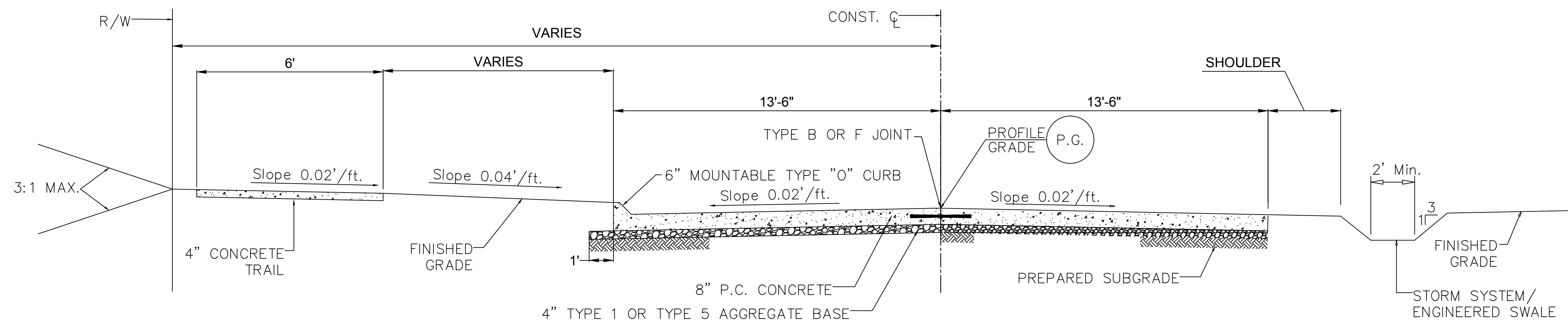
Anthony.gambaro@wentzvillemo.gov

Update: 6/1/2021

CITY OF WENTZVILLE



**WENTZVILLE
PARKWAY SOUTH
PHASE 2/2A**



WENTZVILLE PARKWAY
 SOUTH EXTENSION
 TYPICAL
 SECTION

NO.	DATE	BY	REVISION

DATE: 06/12/2018

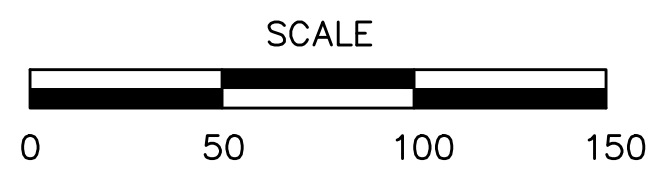
WNTZ PROJECT NO.:

DESIGNED BY:	DRAWN BY:
CHECKED BY:	APPROVED BY:
	CJS

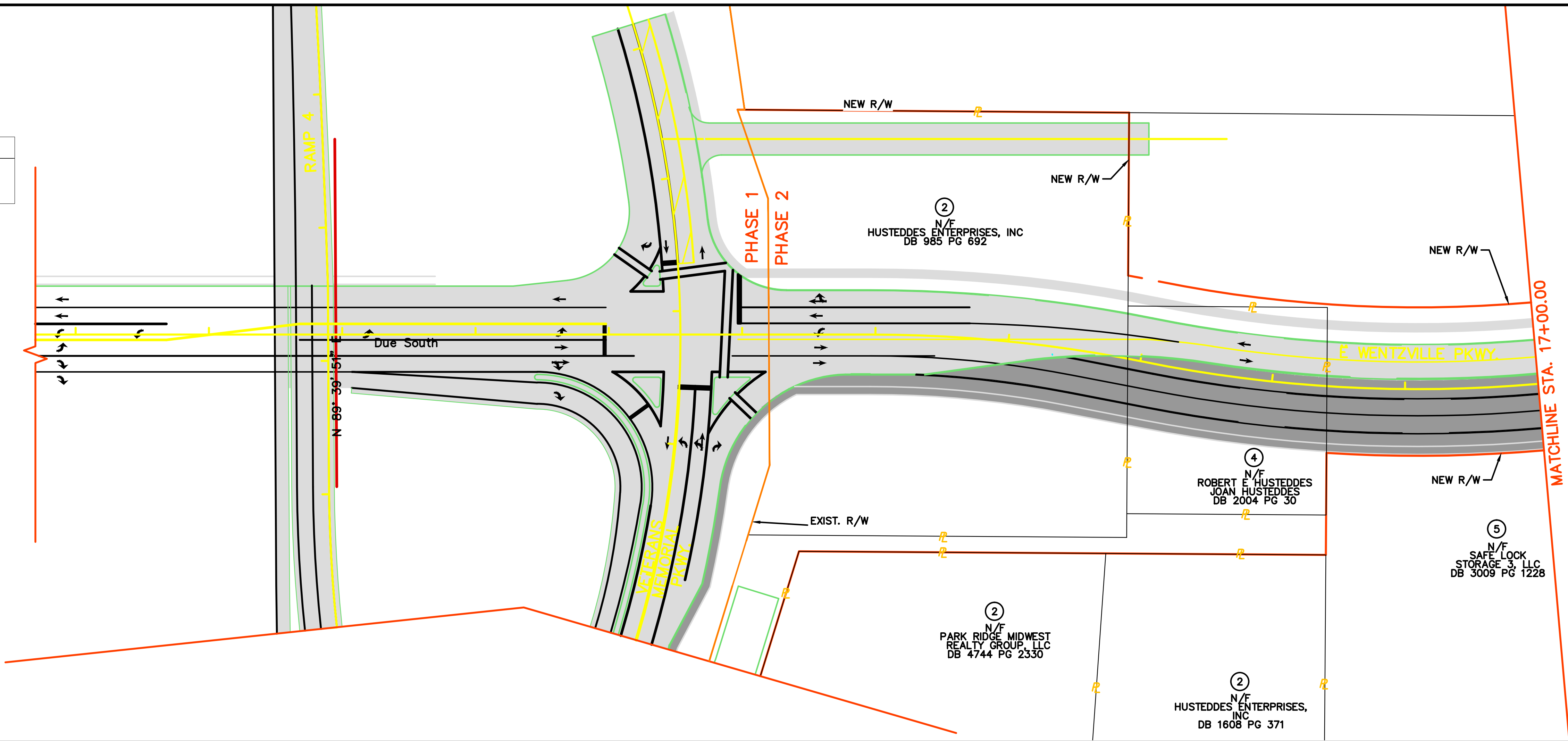
THE RESPONSIBILITY FOR PROFESSIONAL ENGINEERING LIABILITY ON THIS PROJECT IS HEREBY LIMITED TO THE SET OF PLANS AUTHENTICATED UNDER THE SEAL SIGNATURE AND DATE HEREUNDER ATTACHED. RESPONSIBILITY IS DISCLAIMED FOR ALL OTHER ENGINEERING PLANS INVOLVED IN THIS PROJECT AND SPECIFICALLY EXCLUDES REVISIONS AFTER THE DATE UNLESS REAUTHENTICATED.

SEAL

SHEET NUMBER	TOTAL SHEETS
01	01



LEGEND	
	PROPOSED PROJECT
	FUTURE PROJECT



Wentzville Missouri
The Crossroads of the Nation

PUBLIC WORKS DEPARTMENT
1001 SCHROEDER CREEK BLVD.
WENTZVILLE, MISSOURI 63385

PHONE (636) 327-5101 FAX (636) 639-2017

WENTZVILLE PARKWAY
SOUTH EXTENSION

PLAN &
PROFILE

NO.	DATE	BY	REVISION

DATE: 06/12/2018

WNTZ PROJECT NO.:

DESIGNED BY:	DRAWN BY:
CHECKED BY:	APPROVED BY:
	CJS

THE RESPONSIBILITY FOR PROFESSIONAL ENGINEERING LIABILITY ON THIS PROJECT IS HEREBY LIMITED TO THE SET OF PLANS AUTHENTICATED UNDER THE SEAL SIGNATURE AND DATE HEREUNDER ATTACHED. RESPONSIBILITY IS DISCLAIMED FOR ALL OTHER ENGINEERING PLANS INVOLVED IN THIS PROJECT AND SPECIFICALLY EXCLUDES REVISIONS AFTER THE DATE UNLESS REAUTHENTICATED.

SEAL

SHEET NUMBER	TOTAL SHEETS
01	03

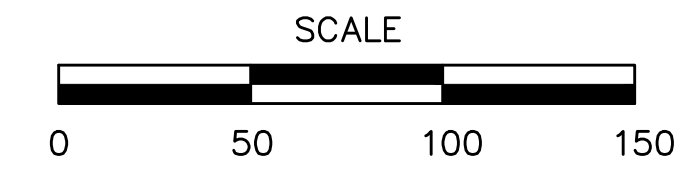
12
N/F
COMMERCIAL PROPERTIES
ACQUISITION COMPANY, LLC
DB 5423 PG 2359

N/F
CITY OF WENTZVILLE, MISSOURI
DB 5034 PG 1080

13
N/F
RALPH W. DEMIEN, TRUSTEE
GERTRUDE P. DEMIEN, TRUSTEE
REVOCABLE LIVING TRUST
DB 3899 PG 1144

12
N/F
COMMERCIAL PROPERTIES
ACQUISITION COMPANY, LLC
DB 5423 PG 2359

14
N/F
COMMERCIAL PROPERTIES
ACQUISITION COMPANY, LLC
DB 5423 PG 2359

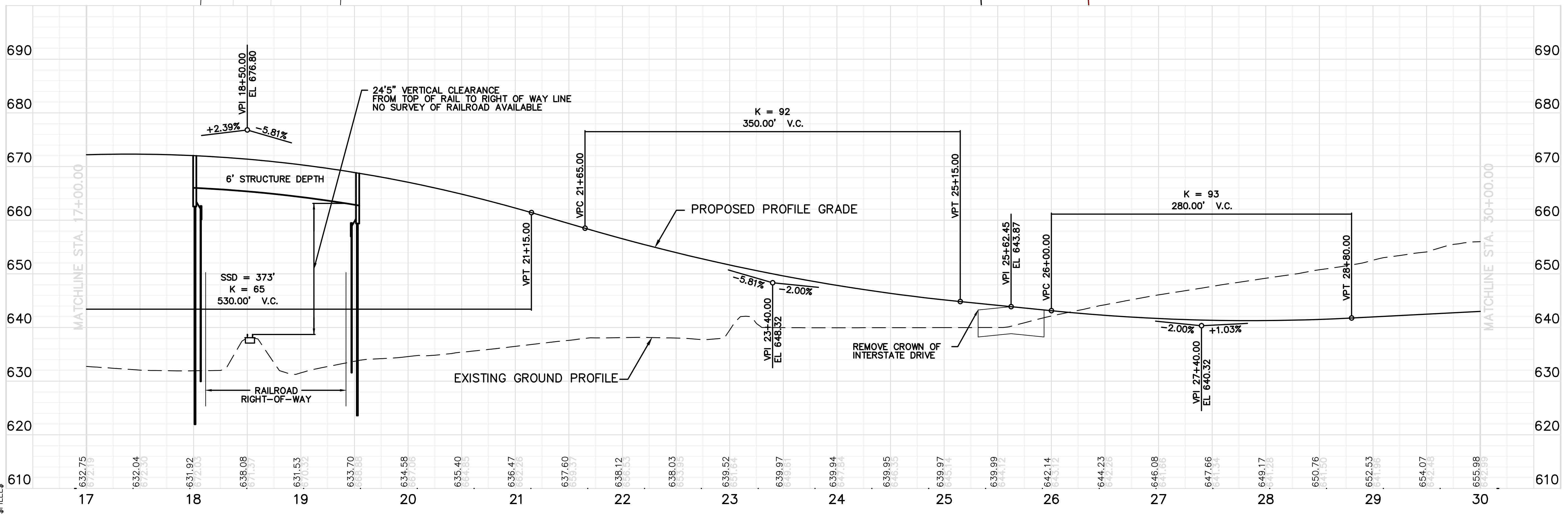


WENTZVILLE PARKWAY
SOUTH EXTENSION
PLAN &
PROFILE

MATCHLINE STA. 17+00.00

MATCHLINE STA. 30+00.00

N/F
SWANTNER INDUSTRIAL
PARK ASSOCIATION
SWANTNER INDUSTRIAL
PARK PLAT TWO
PB 35 PG 346



NO.	DATE	BY	REVISION

DATE: 06/12/2018

WNTZ PROJECT NO.:

DESIGNED BY: DRAWN BY:
CJS

CHECKED BY: APPROVED BY:

THE RESPONSIBILITY FOR PROFESSIONAL ENGINEERING LIABILITY ON THIS PROJECT IS HEREBY LIMITED TO THE SET OF PLANS AUTHENTICATED UNDER THE SEAL SIGNATURE AND DATE HEREUNDER ATTACHED. RESPONSIBILITY IS DISCLAIMED FOR ALL OTHER ENGINEERING PLANS INVOLVED IN THIS PROJECT AND SPECIFICALLY EXCLUDES REVISIONS AFTER THE DATE UNLESS REAUTHENTICATED.

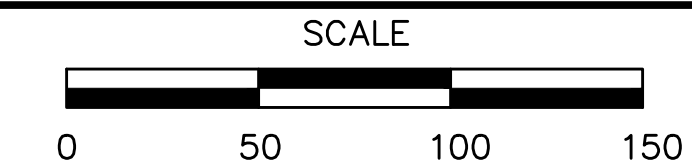
SEAL

SHEET NUMBER	TOTAL SHEETS
02	03

15
N/F
THE YOUNG MEN'S CHRISTIAN
ASSOCIATION OF GREATER ST. LOUIS
DB 4894 PG 696

17
N/F
GERTRUDE R. DEMIEN, TRUSTEE
THE DEMIEN FAMILY TRUST
DB 4892 PG 1495

16
N/F
WILMER FARMS
DB 1886 PG 644



LEGEND

	PROPOSED PROJECT
	FUTURE PROJECT

Wentzville Missouri
The Crossroads of the Nation
PUBLIC WORKS DEPARTMENT
1001 SCHROEDER CREEK BLVD.
WENTZVILLE, MISSOURI 63385
PHONE (636) 327-5101 FAX (636) 639-2017

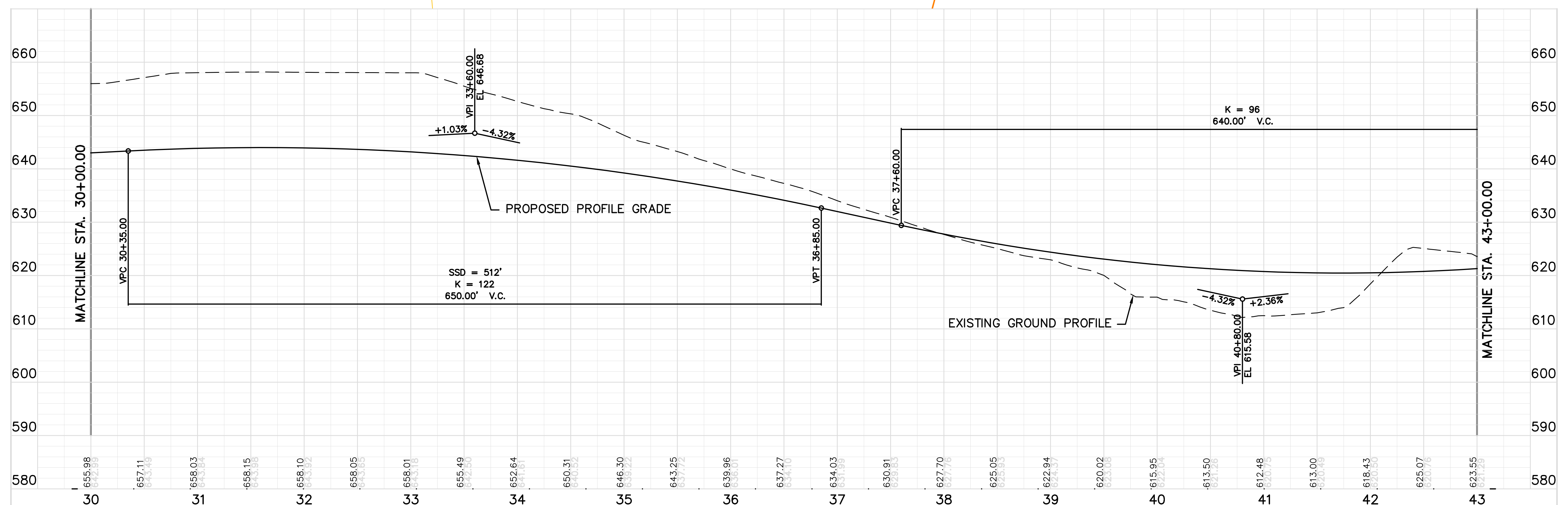
WENTZVILLE PARKWAY
SOUTH EXTENSION
PLAN &
PROFILE

MATCHLINE STA. 30+00.00

E WENTZVILLE PKWY.

PHASE 2A
PHASE 3

MATCHLINE STA. 43+00.00



NO.	DATE	BY	REVISION

DATE: 06/12/2018

WNTZ PROJECT NO.:

DESIGNED BY: DRAWN BY:

CHECKED BY: APPROVED BY:

THE RESPONSIBILITY FOR PROFESSIONAL ENGINEERING LIABILITY ON THIS PROJECT IS HEREBY LIMITED TO THE SET OF PLANS AUTHENTICATED UNDER THE SEAL SIGNATURE AND DATE HEREUNDER ATTACHED. RESPONSIBILITY IS DISCLAIMED FOR ALL OTHER ENGINEERING PLANS INVOLVED IN THIS PROJECT AND SPECIFICALLY EXCLUDES REVISIONS AFTER THE DATE UNLESS REAUTHENTICATED.

SEAL

SHEET NUMBER	TOTAL SHEETS
03	03