



# County Executive

## 2011 Annual Report

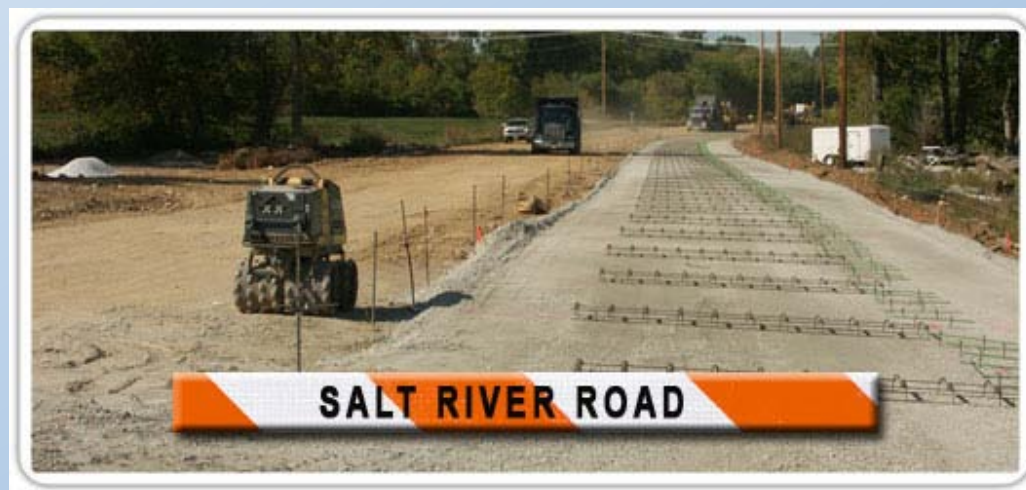
## Growing Transportation Network

- Phase II/Missouri Route 364 Construction
  - *Anticipated completion in Summer 2012*
- Funding for Phase III/Missouri Route 364
- Gateway Green Light development
- Intersection Improvements
  - *Funding for improvements at I-70 & Mid Rivers Mall Drive*
  - *Funding of analysis of I-70 & Route K*



## Growing Transportation Network

- Completed construction of Salt River Road Extension
- Funded shoulder & other safety improvements on lettered & numbered routes
- Developed project information tool for residents on Highway Department webpage



## Improving Access to Information

- Launched new County website
- Began public beta-testing new GIS mapping platform
- Expanded use of social media to communicate with citizens
  - *YAP Facebook & Health Twitter*
- Recorder of Deeds
  - *35% of documents were electronically recorded in 2011, up from 19% in 2010.*
  - *Digitization of land records from 1804-1993 for future public searches*



## Parks & Recreation Activities

- Approximately 4,000 people participated in permitted bicycle or organized running events
- Volunteers contributed more than 3,000 hours of labor to projects in County parks
  - *Building trails*
  - *Special events*
  - *Operation of Heritage Museum*
  - *Development of Nature Explore Classroom @ Towne Park*
- Heritage Museum First Year Operations
  - *More than 3,500 visitors*



## Promoting Healthy Communities

- Over 750 community outreach programs conducted by the Dept. of Community Health & Environment for schools, local businesses and daycare centers
  - *Education & Training Topics*
    - Emergency preparedness
    - Overall health & well-being, including:
      - *Nutrition*
      - *STDs*
      - *First Aid/CPR*
      - *Food Service Safety*
    - Pet health & behavioral training



## Community Outcomes

- Ranked among Missouri's healthiest counties for the 2<sup>nd</sup> consecutive year
- Recycling
  - *Recycle Works collected more than 2 million pounds of recyclable material*



- Pets
  - *Pet Adoption Center placed nearly 2,300 pets in new homes*
  - *Returned 828 lost pets to their families*

## Community Services

47% of homeless persons are under age of 18.

60% are under the age of 25<sup>1</sup>



- 8 Housing Choice Voucher Program opened waiting list
  - *1<sup>st</sup> time to apply for waiting list in 3 years*
  - *More than 700 applicants in 8 hours*

<sup>1</sup> St. Charles, Warren and Lincoln Co. Continuum of Care Homeless Point-in-Time Count, January 2012



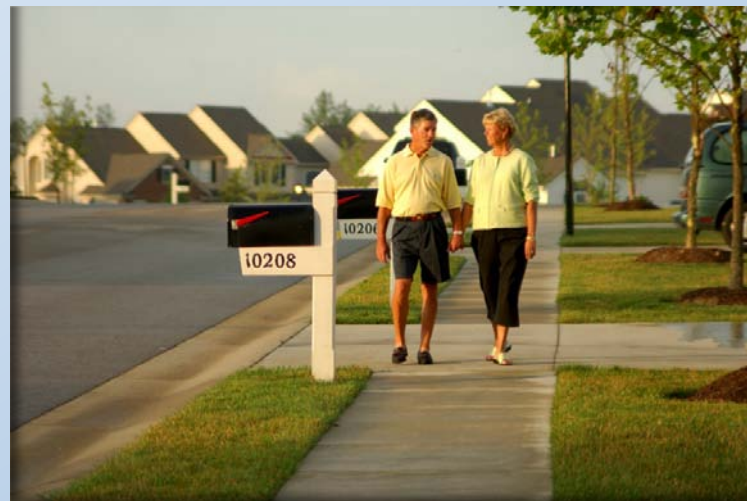
## Community Services

- Community Assistance Board (both Homeless & Indigent funds) provided assistance to more than 7,500 people
  - *Utility assistance*
  - *Rental assistance*
  - *Counseling including developing a family financial plan*
- Emergency Shelter Grant (MoDSS) served 390 individuals



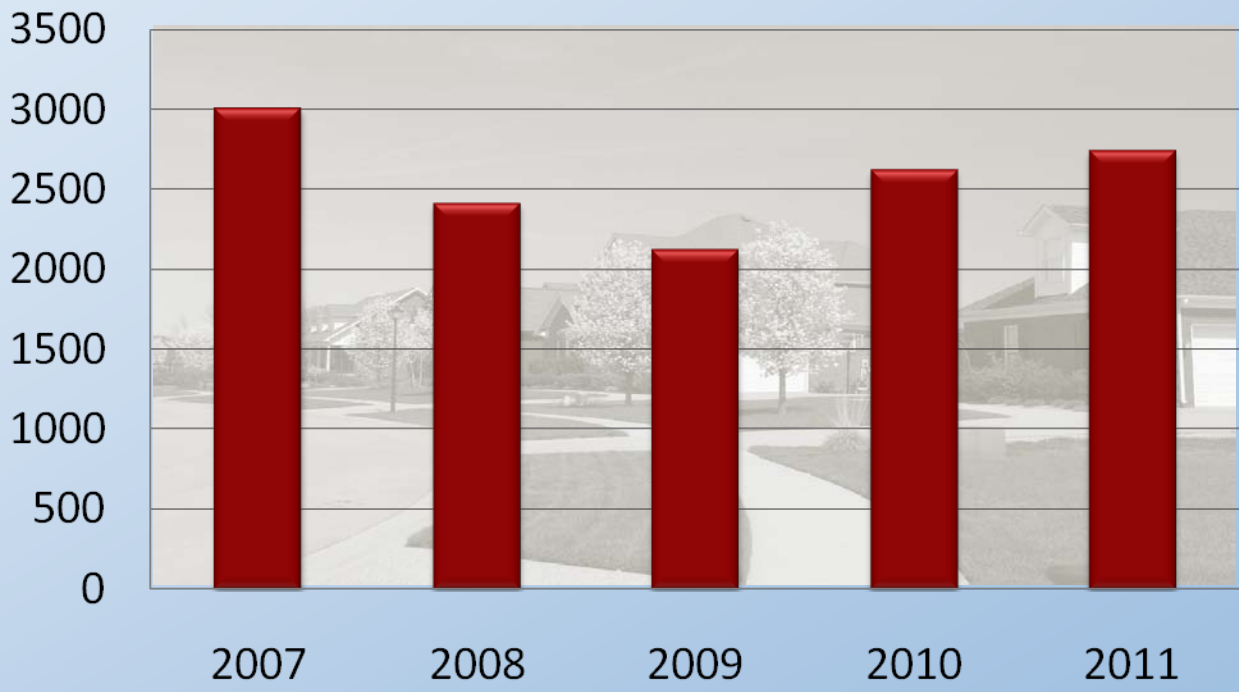
## Ensuring Livable Communities

- 18% reduction of Neighborhood Preservation resident complaints regarding repeat violations
- Provided Home Maintenance & Repair Assistance to 48 low-income residents through urban-county CDBG
- Provided D.A.R.E classes to 1,725 students in 18 area schools
- Total crimes per 1,000 residents dropped for 3<sup>rd</sup> year in a row to 14/1000



# Building Permits

## Total Number of Permits Issued Unincorporated St. Charles County



## Reducing Cost of County Government Facilities

- Focus on energy efficiency
  - *Installed more efficient fluorescent lighting systems*
  - *Replaced aging roofs*
  - *Installed new water heater in the Justice Center*

*Will cut operating costs by at least \$150,000 annually*



- Launched pilot recycling program
  - *Single Stream Recycling in most County facilities (152 tons in 9 mo.)*
- Updated emergency response plans in County facilities

## Maintaining & Developing a Quality Workforce

- Unemployment Rate
  - *Ended 2011 at 6.6%, down from 8.9% in January 2011*
- Department of Workforce Development
  - *Served ≈ 730 Businesses*
    - Employee recruitment
  - *Served 15,430 Individuals*
    - Career & vocational counseling
    - Career skills assessments
    - Computer workshops
    - Job searches



## Economic Development

- Referred 4,300 individuals to GM for production positions in Wentzville
- Participated in promotion of important regional asset—Lambert Airport—to create job and new business opportunities



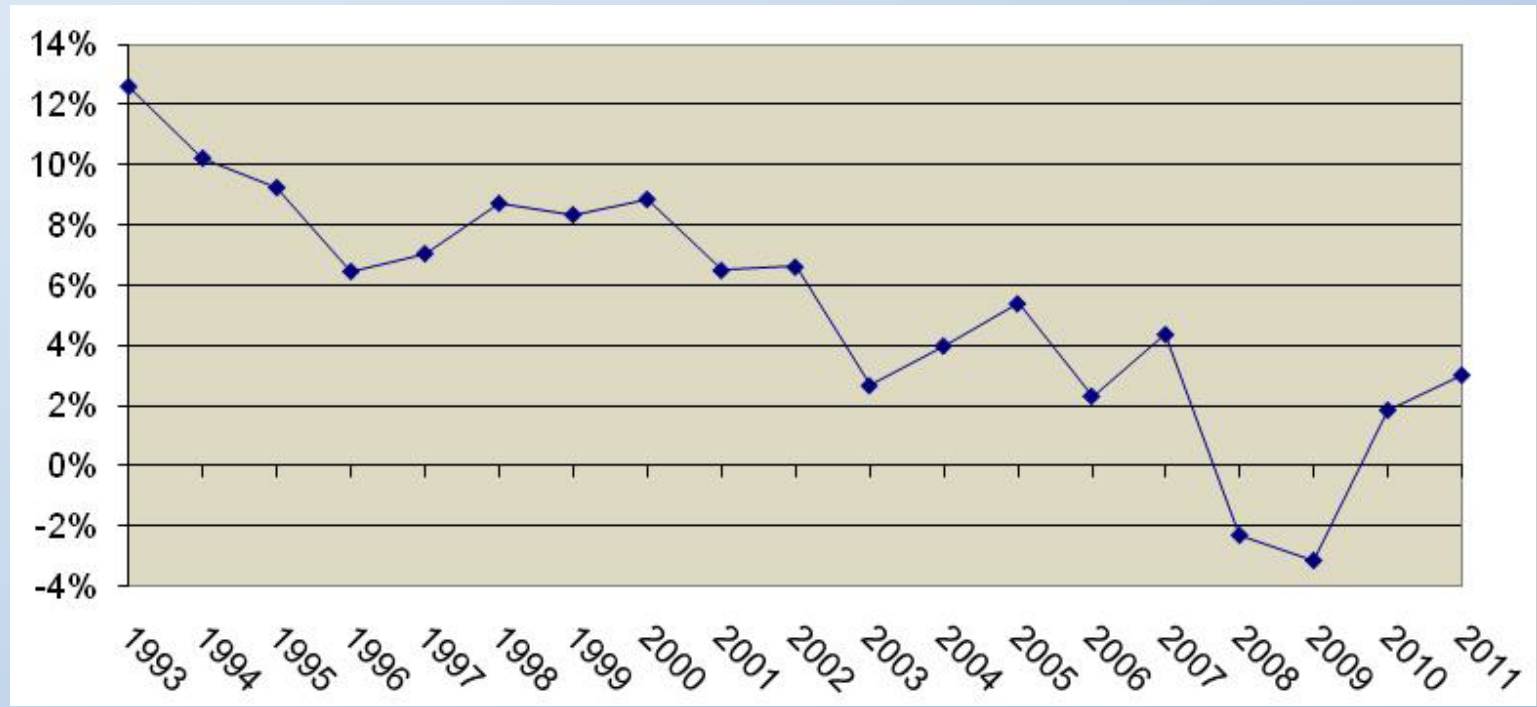
## Going Forward

- Enacted 2012 budget that provided small raise for employees and maintained County services against a backdrop of:
  - *Having maintained property tax rates*
  - *Limited revenue growth*
  - *Increasing costs*
    - 10.4% increase in LAGERS contribution in each of last 3 yrs.
    - 27% increase in healthcare costs absorbed by the budget from 2009 to 2011
    - Compression & pay grid that is 3-4% behind market
    - Depleting Self-Insurance Fund balance



# Sales Tax Growth

Sales Tax Growth  
1993-2011 Actual





## What's Ahead

- Completion of I-364/Page Ave. Phase II
- Renewal of County Transportation Sales Tax
- Dedication and opening of Towne Park
- Completion of additional courtroom in Courts Administration Building



## What's Ahead

- Roll-out of new Community Health & Environment website
- Build-out of new emergency radio communications system
- Installation of ticket payment kiosk @ Municipal Court
- Continued push for TIF Reform

