

FOR IMMEDIATE RELEASE

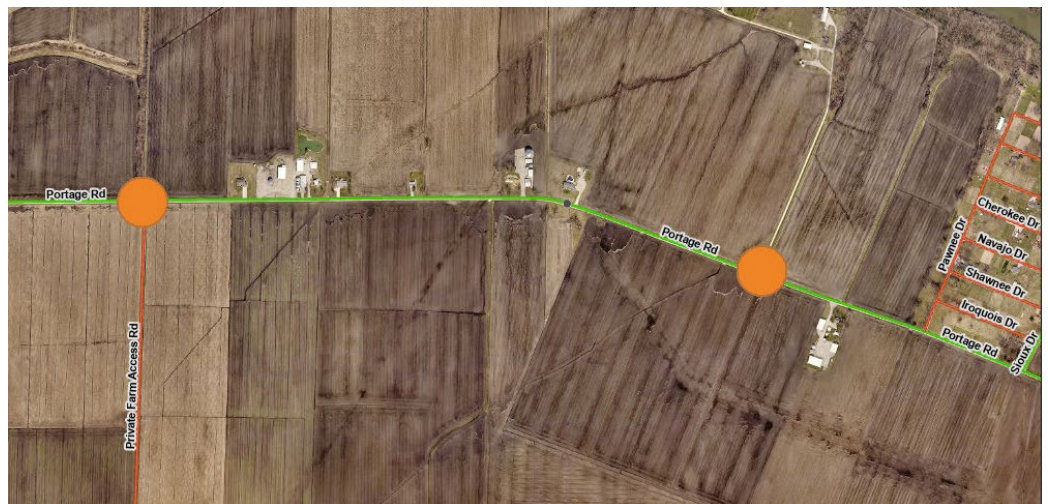
May 8, 2023

PORTAGE ROAD TO CLOSE BETWEEN REESE ROAD AND SIOUX DRIVE MAY 15-23

ST. CHARLES COUNTY, MO – The St. Charles County Highway Department will close Portage Road in two locations between Reese Road and Sioux Drive from Monday, May 15 through Tuesday, May 23, weather permitting. The closure is necessary to replace culvert pipes. The locations will **NOT** be closed simultaneously.

Traffic will be required to use an alternate route around the closure while the culverts are being replaced. Signs notifying motorists of the closure will be posted.

This road project is part of a continuing effort by St. Charles County Government to improve the County's road system for the safety of the travelling public. For more information about road projects underway in unincorporated St. Charles County, please call the Highway Department at 636-949-7305 or visit sccmo.org/RoadProjects.



-end-

Media Contact: Mary Enger, Communications Director, 636-949-1856, or 636-443-1008, menger@sccmo.org

About St. Charles County:

St. Charles County, Missouri, founded in 1812, is one of the fastest growing counties in Missouri. With a population of 405,262, it is the state's third largest county. It is home to 22 scenic county parks of which three are in reserve, encompassing 4,509 acres.

With one of the largest economies in the state, St. Charles County is home to multinational companies including General Motors, Citi, MasterCard Worldwide and Boeing. It is ranked among the top 25 counties in the nation in high-tech job growth by the Progressive Policy Institute and consistently has the lowest unemployment rate in the Metropolitan St. Louis area.

St. Charles County Government has more than 1,170 employees in more than 30 departments and offices who work to make the county an excellent place to live, work and shop. For more information, please visit sccmo.org.