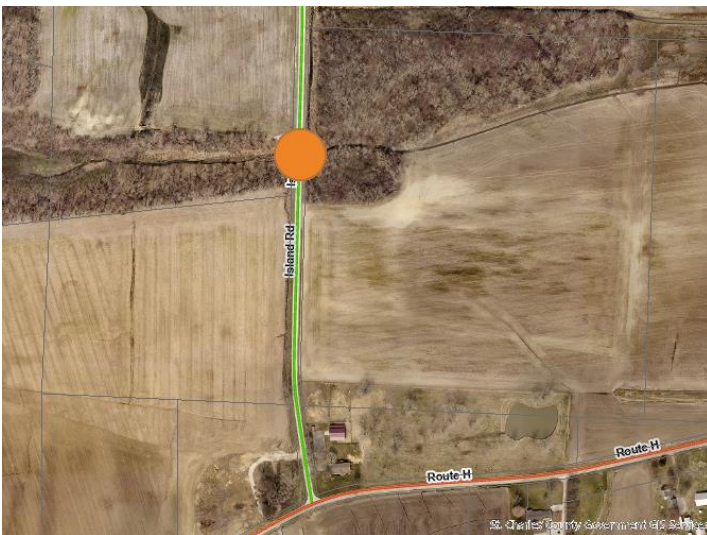


FOR IMMEDIATE RELEASE

April 13, 2023

ISLAND ROAD TO CLOSE NORTH OF HIGHWAY H APRIL 24-27

ST. CHARLES COUNTY, MO – The St. Charles County Highway Department will close Island Road north of Highway H, weather permitting, Monday, April 24, through Thursday, April 27, to replace a storm sewer pipe.



Traffic will be required to use an alternate route around the closure while the culvert is being replaced. Signs notifying motorists of the closure will be posted.

This road project is part of a continuing effort by St. Charles County Government to improve the County's road system for the safety of the travelling public. For more information about road projects underway in unincorporated St. Charles County, please call the Highway Department at 636-949-7305 or visit [sccmo.org/RoadProjects](https://www.sccmo.org/RoadProjects).

-end-

Media Contact: Mary Enger, Communications Director, 636-949-1856, or 636-443-1008, menger@sccmo.org

About St. Charles County:

St. Charles County, Missouri, founded in 1812, is one of the fastest growing counties in Missouri. With a population of 405,262, it is the state's third largest county. It is home to 21 scenic county parks of which three are in reserve, encompassing 4,349 acres.

With one of the largest economies in the state, St. Charles County is home to multinational companies including General Motors, Citi, MasterCard Worldwide and Boeing. It is ranked among the top 25 counties in the nation in high-tech job growth by the Progressive Policy Institute and consistently has the lowest unemployment rate in the Metropolitan St. Louis area.

St. Charles County Government has more than 1,170 employees in more than 30 departments and offices who work to make the county an excellent place to live, work and shop. For more information, please visit [sccmo.org](https://www.sccmo.org).