

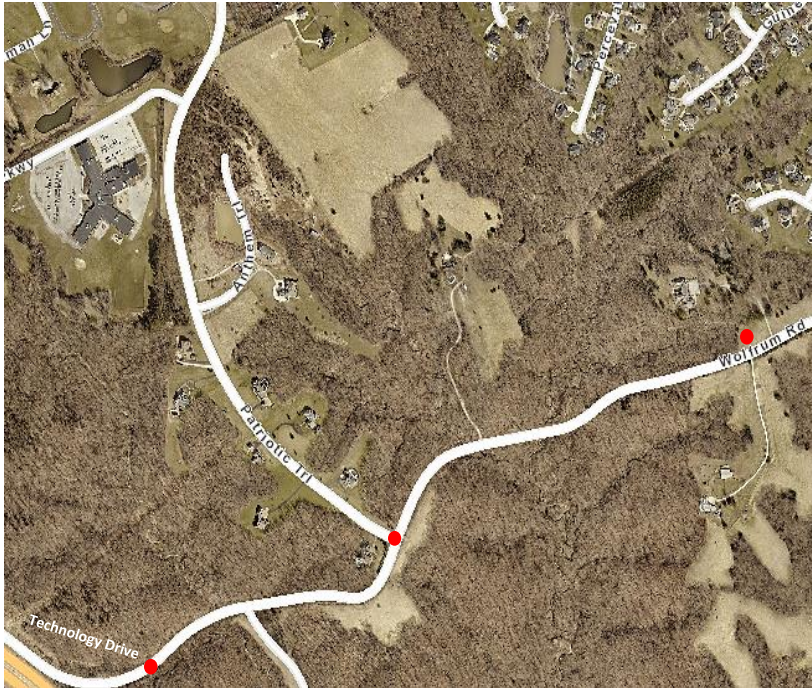


NEWS RELEASE

FOR IMMEDIATE RELEASE

Oct. 13, 2021

PORTION OF WOLFRUM ROAD TO CLOSE FOR PAVEMENT REPAIR OCT. 18



ST. CHARLES COUNTY, MO –The St. Charles County Highway Department, at the request of the City of Weldon Spring, will close Wolfrum Road between 297 Wolfrum Road and Technology Drive, weather permitting, 9:30 a.m.-3:30 p.m., Monday, Oct. 18, for pavement repair.

Traffic will be required to use an alternate route around the closure while the pavement is repaired. Local traffic can access either side of the closure location, but no through traffic will be permitted. Signs notifying motorists of the closure and necessary detours will be posted.

For more information about road projects underway, please call the Highway Department at 636-949-7305 or visit [sccmo.org/RoadProjects](https://www.sccmo.org/RoadProjects).

-end-

Media Contact: Mary Enger, Communications Director, 636-949-1856, or 636-443-1008, menger@sccmo.org

About St. Charles County:

St. Charles County, Missouri, founded in 1812, is one of the fastest growing counties in Missouri. With a population of 405,262, is it the state's third largest county. It is home to 17 scenic county parks encompassing nearly 4,000 acres with additional land under development and more in reserve for future development.

With one of the largest economies in the state, St. Charles County is home to multinational companies including General Motors, Citi, MasterCard Worldwide and Boeing. It is ranked among the top 25 counties in the nation in high-tech job growth by the Progressive Policy Institute and consistently has the lowest unemployment rate in the Metropolitan St. Louis area.

St. Charles County Government has more than 1,170 employees in more than 30 departments and offices who work to make the county an excellent place to live, work and shop. For more information, please visit [sccmo.org](https://www.sccmo.org).