



# NEWS RELEASE

**FOR IMMEDIATE RELEASE**

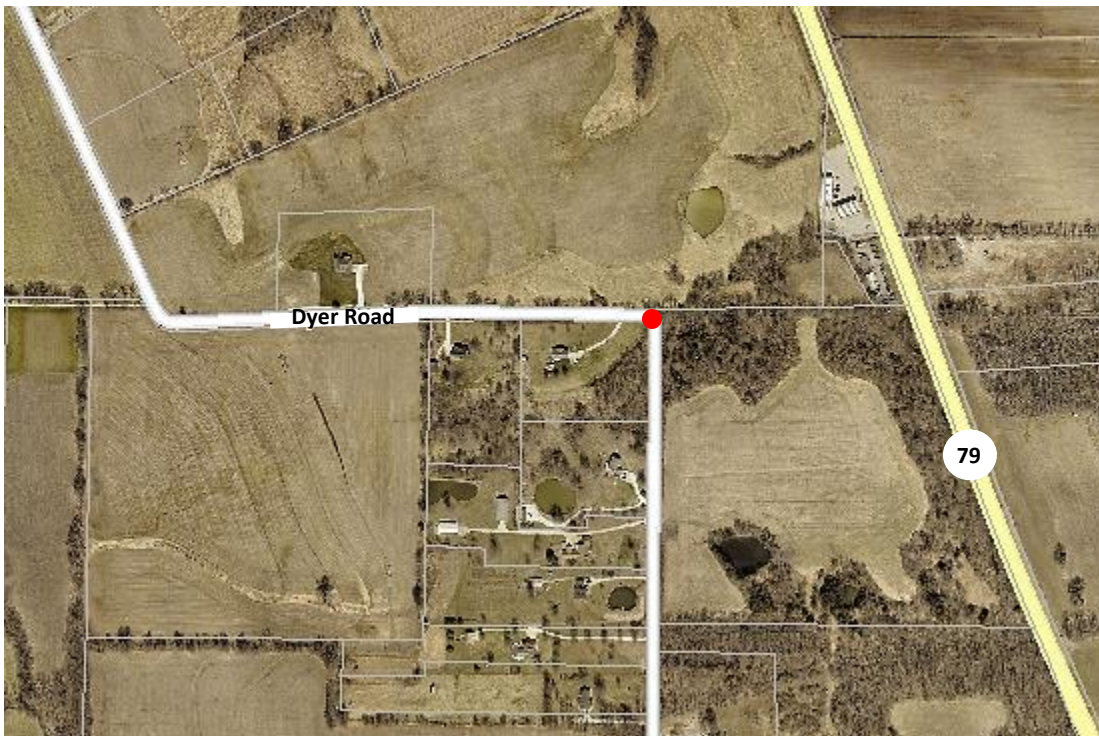
July 12, 2021

## **SECTION OF DYER ROAD TO CLOSE FOR CULVERT REPLACEMENT JULY 26-29**

**ST. CHARLES COUNTY, MO** – The St. Charles County Highway Department will close a section of Dyer Road near 2889 Dyer Road, weather permitting, Monday, July 26, through Thursday, July 29, to allow for removal and replacement of a deteriorated culvert.

Traffic will be required to use an alternate route around the closure while the culvert is replaced. Signs notifying motorists of the closure and necessary detours will be posted. The detour route will include portions of Dyer Road, Vomund Road, and Highway 79.

This road project is part of a continuing effort by St. Charles County Government to improve the County's road system for the safety of the travelling public. For more information about road projects underway in unincorporated St. Charles County, please call the Highway Department at 636-949-7305 or visit [sccmo.org/RoadProjects](https://www.sccmo.org/RoadProjects).



-end-

**Media Contact:** Mary Enger, Communications Director, 636-949-1856, or 636-443-1008, [menger@sccmo.org](mailto:menger@sccmo.org)

### ***About St. Charles County:***

*St. Charles County, Missouri, founded in 1812, is one of the fastest growing counties in Missouri. With a population of 407,056, it is the state's third largest county. It is home to 17 scenic county parks encompassing nearly 4,000 acres with additional land under development and more in reserve for future development.*

*With one of the largest economies in the state, St. Charles County is home to multinational companies including General Motors, Citi, MasterCard Worldwide and Boeing. It is ranked among the top 25 counties in the nation in high-tech job growth by the Progressive Policy Institute and consistently has the lowest unemployment rate in the Metropolitan St. Louis area.*

*St. Charles County Government has more than 1,170 employees in more than 30 departments and offices who work to make the county an excellent place to live, work and shop. For more information, please visit [sccmo.org](http://sccmo.org).*