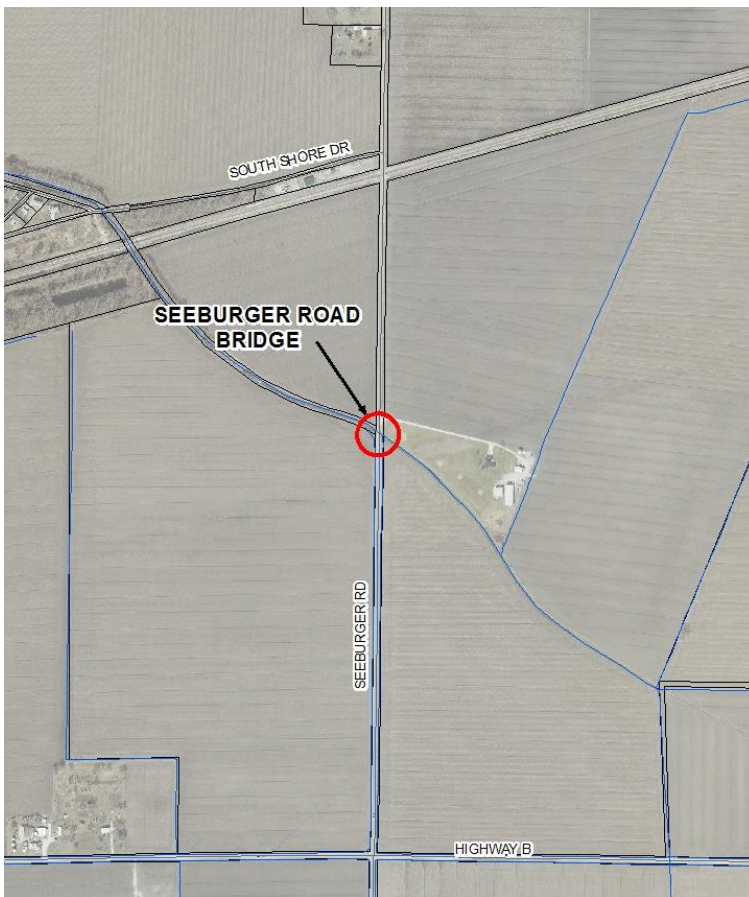


FOR IMMEDIATE RELEASE

April 19, 2021

**REVISED CLOSURE DATE: PORTION OF SEEBURGER ROAD TO CLOSE APRIL 26 THROUGH MID-JULY
FOR BRIDGE REPLACEMENT**

ST. CHARLES COUNTY, MO – The St. Charles County Highway Department will close Seeburger Road south of the railroad tracks/South Shore Drive and north of Missouri Route B starting Monday, April 26, through mid-July, to allow for removal and replacement of a deteriorated bridge.



Traffic will be required to use the signed detour route around the closure while the bridge is replaced. Local traffic will be able to access either side of the closure location, but no through traffic will be permitted. The detour route includes Missouri Route B from Seeburger Road to Washeon Road, and Church Road from Washeon Road to Seeburger Road. Signs notifying motorists of the closure and necessary detours will be posted. All work is weather permitting.

This road project is part of a continuing effort by St. Charles County Government to improve the County's road system for the safety of the travelling public. For more information about road projects underway in unincorporated St. Charles County, please call the Highway Department at 636-949-7305 or visit sccmo.org/RoadProjects.

-end-

Media/Press Contact: Mary Enger, Communications

Director, 636-949-1856, or 636-443-1008, menger@sccmo.org

About St. Charles County:

St. Charles County, Missouri, founded in 1812, is one of the fastest growing counties in Missouri. With a population of 407,056, is it the state's third largest county. It is home to 17 scenic county parks encompassing nearly 4,000 acres with additional land under development and more in reserve for future development.

With one of the largest economies in the state, St. Charles County is home to multinational companies including General Motors, Citi, MasterCard Worldwide and Boeing. It is ranked among the top 25 counties in the nation in high-tech job growth by the Progressive Policy Institute and consistently has the lowest unemployment rate in the Metropolitan St. Louis area.

St. Charles County Government has more than 1,170 employees in more than 30 departments and offices who work to make the county an excellent place to live, work and shop. For more information, please visit sccmo.org.