

FOR IMMEDIATE RELEASE:

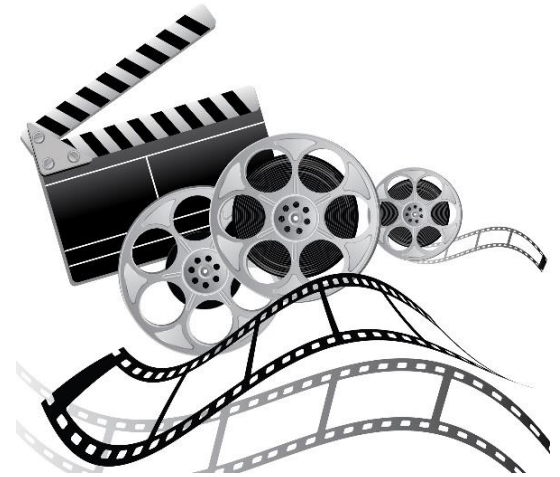
Aug. 6, 2020

Contact: Nancy Lee Gomer, Marketing Coordinator, 636-949-7535, or 636-795-1137, ngomer@sccmo.org

MISSOURI FILM SERIES FEATURED AT ST. CHARLES COUNTY HERITAGE MUSEUM

ST. CHARLES COUNTY, MO – The “Missouri Film Series: A Local Documentary Showcase” returns to the St. Charles County Heritage Museum, 1630 Heritage Landing in St. Peters on select Thursdays in September, October and November. This season’s lineup features three powerful documentaries about identity, regionalism and diversity in Missouri communities which premiered in St. Louis and were shown at SXSW and the Sundance Film Festival.

After each of the screenings at the Heritage Museum, participants are invited to share their stories and engage in a discussion. The list of featured films are as follows:



- **Sept. 10 from 7:30 – 10 p.m.: “We Always Lie to Strangers: The Incredible True Story of Branson, Missouri.”**

Set against the backdrop of Branson, Mo., one of the biggest tourist destinations in America, is a story of four families, community, music, and tradition. An Ozark Mountain town of just 10,500, Branson hosts more than 7.5 million tourists a year and generates nearly \$3 billion in annual tourism revenue. At the heart of Branson’s appeal is the more than 100 staged music shows that earned the town the moniker, “The Live Music Capital of the World.” Crowds from around the country, particularly from the Midwest, flock to Branson for this “return to old fashioned values.” [Watch the trailer.](#)

- **Oct. 29 from 7:30 – 10 p.m.: “Walking Man”**

After a Missouri high school loses three students to suicide, Mark Norwine, a St. Charles health advocate, embarks on a 200-mile walk across the state, seeking to educate students and better understand the epidemic. Mark is joined by his son, Eric, but when the road proves difficult, father and son must confront their own mental health struggles, which they’ve kept secret for so long. Endorsed by universities and mental health organizations across the United States, “Walking Man” is an honest look at one family’s journey with mental illness. [Watch the trailer.](#)

-more-

Heritage Museum Film Documentaries, p. 2

- **Nov. 14 from 6 – 8 p.m.: “Spanish Lake”**

Directed by a former resident of the Spanish Lake community, this film examines how the area, located in north St. Louis County, rapidly transformed from a white suburb into a mostly Black one after the notorious St. Louis housing project called Pruitt-Igoe closed. Many of the “Lakers” placed blame for the white flight and desegregation that happened to this tight-knit community on the government. The themes of the film parallel America’s growing political divide, underlying racism, and rise of anti-government sentiment. [Watch the trailer.](#)

Due to adult themes and language, the series is open to participants age 14 and older. Admission is free, but pre-registration is required for each film. To reserve a seat, call the museum at 636-255-6000 or visit the St. Charles County Parks and Recreation Department’s website at stccparks.org and click on “Activity Registration,” then choose the film or films of your choice. If the weather is suitable, the showings on Sept. 10 and Oct. 20 may be moved outdoors; guests must pass a temperature check to enter the museum.

-end-

About St. Charles County Parks & Recreation

The St. Charles County Parks & Recreation Department was created in 1997 after voters approved a local use tax with the sole purpose of park land acquisition, development, operations and maintenance. The department’s mission is to preserve natural and historic features in areas throughout the county for the use of future generations. Today, the department operates 16 parks that total 3,645 acres of acquired park land. From historic homesteads to a youth skate park; from camping, hiking, biking, and fishing to weddings and educational classrooms, there’s something for everyone in St. Charles County Parks.

For more information and specifics about each park, amenities, trails, and more, visit stccparks.org.