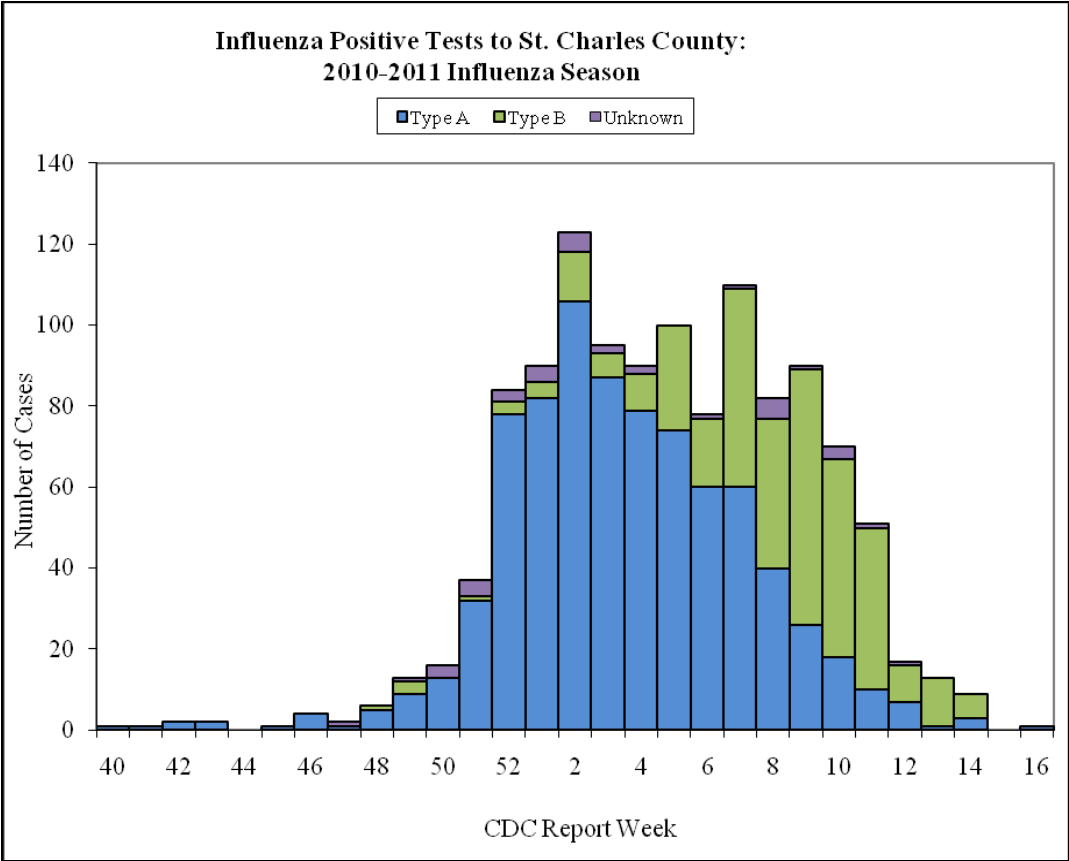


St. Charles County
 Department of Community Health and Environment
 Influenza Season 2010-2011

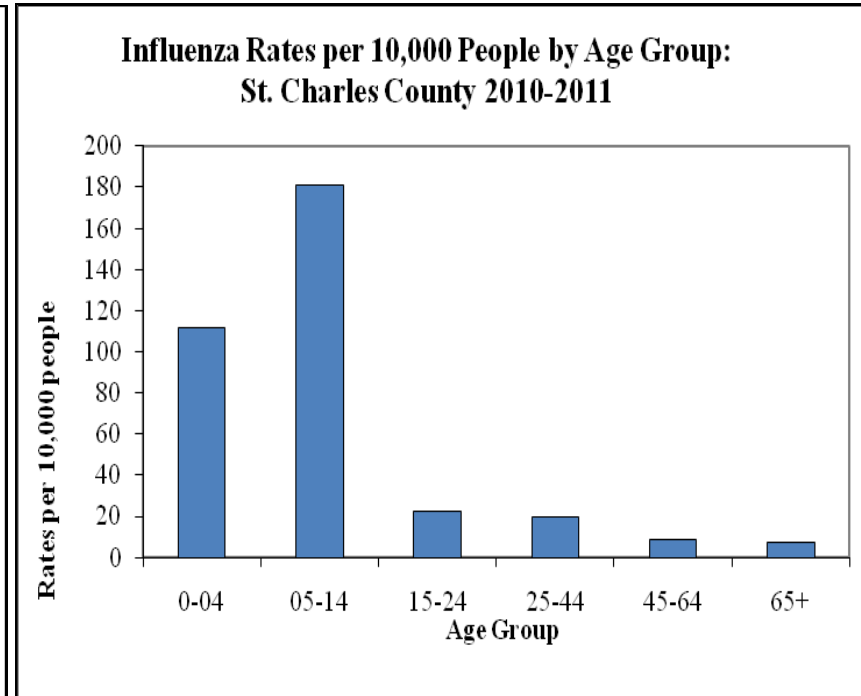
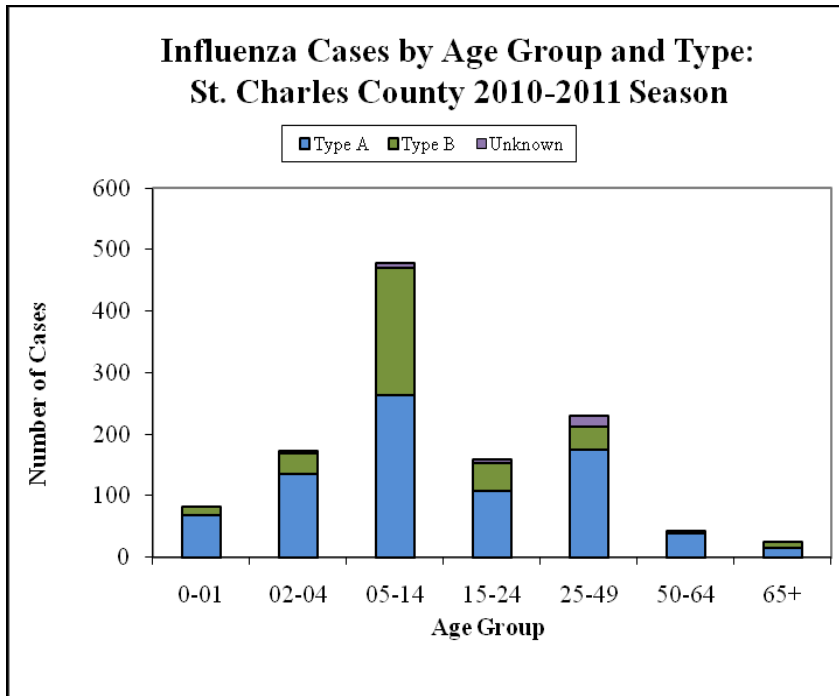
Report Date: April 22, 2011 – CDC report week 16

Influenza season begins the beginning of October, since that time we have had 1188 cases of influenza reported to our office. Of the 1188 cases the majority are type A (subtyping not performed): 803 cases are type A (67.6%), 347 (29.2%) are type B and 38 (3.2%) are unknown. Approximately 75% of the cases reported since week 8 have been Influenza Type B. We had one case diagnosed in week 16, no cases diagnosed in week 15.

Graph1: Influenza cases by type and report week in St. Charles County



Graph 2 and 3: Number of Influenza cases and rates of influenza cases by age group. In past years the highest number of flu cases has been in the 05-14 age-group and although it is still the highest this year, we are also seeing high numbers in the 25-49 age group. We have not seen this since the 2007-2008 flu season. The highest rate of influenza per 10,000 people is still in the 0-4 and 05-14 age groups.



Graph 3: Five year comparison of total number of influenza cases by report week. Seasons 07-08 and 10-11 were our busiest flu seasons in the last 5 years. Season 2010-2011 was also a busy flu season, but with a wider distribution of cases over time compared to other years.

