

St. Charles County Annual Communicable Disease Report
Department of Public Health
2016

Reportable Conditions: St Charles County Report Summary

The data presented below is a summary of the reportable diseases that meet the confirmed and probable Missouri Department of Health and Senior Services case definitions (excluded from this report are Sexually Transmitted Diseases and Influenza. Those can be found in separate reports). There were a total of 940 confirmed and probable reportable cases in St. Charles County in 2016. This is a 5% decrease from the previous year or 47 fewer cases than 2015.

Enteric: Overall, there were fewer enteric cases reported in 2016 than previous years. However, *Cryptosporidiosis* cases in 2016 have more than doubled the previous 5 year median. *Shigellosis* cases have also doubled the previous 5 year median. After the number of *Giardiasis* cases dropped in 2015, the number of cases has increased back to 12 matching the total for 2012, 2013, and 2014.

Respiratory: There was an overall increase in the number of respiratory illnesses reported in 2016 compared to 2015. *Strep Pneumoniae, drug resistant* cases are 4 times higher than the previous 5 year median total, part of this increase is due to a change in reporting requirements. Also both *Haemophilus Influenza* and *Legionellosis* cases have doubled since the previous 5 year median numbers were recorded. There were 5 cases of pertussis reported in 2016, the lowest number of cases we have seen since 2007.

Vectorborne and Zoonotic: The number of vectorborne and zoonotic cases has decreased from 2015. 2 fewer cases were reported in 2016 than the previous 5 year median. One case of *Dengue* and 2 cases of *Anaplasma phagocytophilum* was reported in 2016, a 100% increase above the 5 year median.

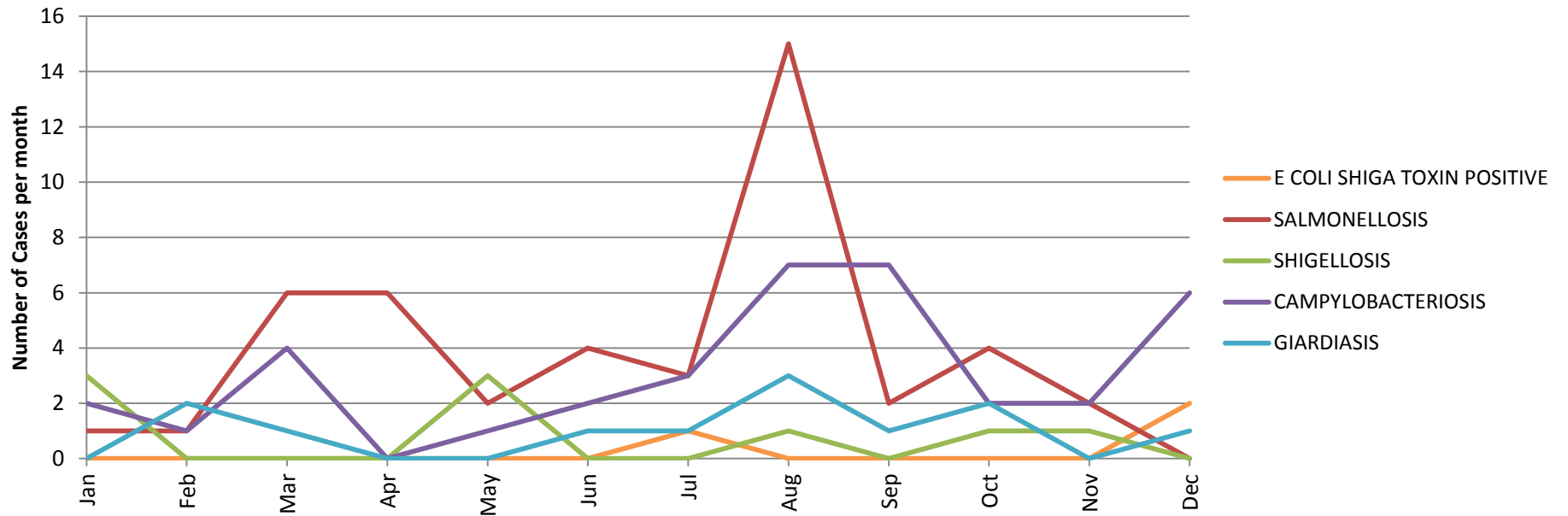
Tuberculosis and Latent TB Infections (LTBI): There were 74 LTBI cases and 2 cases of active Tuberculosis reported in St Charles County in 2016.

	Year to Date Totals						Previous YTD 5 Yr Median	% Change From YTD 5 Yr Median	YTD 2016 Rate Per 100000
	2011	2012	2013	2014	2015	2016			
Enteric, Food and Waterborne									
CAMPYLOBACTERIOSIS	56	45	44	37	45	37	45	-21.6%	9.75
CRYPTOSPORIDIOSIS	5	12	9	6	4	15	6	60.0%	3.95
E COLI SHIGA TOXIN POSITIVE	11	11	8	7	13	3	11	-266.7%	0.79
E. COLI O157 H7	7	16	10	0	4	4	7	-75.0%	1.05
GIARDIASIS	18	12	12	12	9	12	12	0.0%	3.16
HEPATITIS A ACUTE	3	0	0	1	0	1	0	100.0%	0.26
LISTERIOSIS	0	0	0	1	0	0	0	0.0%	0.00
SALMONELLOSIS	39	40	55	42	39	46	40	13.0%	12.12
SHIGA TOXIN POSITIVE (NON E. COLI, UNK)	0	1	0	0	0	1	0	100.0%	0.26
SHIGELLOSIS	3	4	3	34	31	9	4	55.6%	2.37
YERSINIOSIS	0	1	0	0	1	0	0	0.0%	0.00

Enteric total	142	142	141	140	146	128		142	-10.9%	33.73
Respiratory and Direct Contact										
ADULT RESPIRATORY DISTRESS SYNDROME (ARDS)	1	0	0	0	0	0		0	0.0%	0.00
HAEMOPHILUS INFLUENZAE, INVASIVE	5	6	4	4	2	10		4	60.0%	2.64
LEGIONELLOSIS	0	5	4	5	4	12		5	62.5%	3.16
PERTUSSIS	26	60	43	24	14	5		26	-420.0%	1.32
STREP DISEASE, GROUP A INVASIVE	12	6	7	8	13	4		8	-87.5%	1.05
STREP PNEUMONIAE, <5 YEARS, INVASIVE	1	1	0	0	2	0		1	0.0%	0.00
STREP PNEUMONIAE, DRUG-RESISTANT	4	6	3	7	5	21		5	76.2%	5.53
Respiratory Total	49	84	61	48	40	52		49	5.8%	14.43
Vectorborne and Zoonotics										
ANAPLASMA PHAGOCYTOPHILUM	0	1	0	1	0	2		0	100.0%	0.53
CHIKUNGUNYA	0	0	0	0	0	0		0	0.0%	0.00
DENGUE FEVER	0	1	0	0	0	1		0	100.0%	0.26
EHRlichia CHAFFEENSIS	5	4	11	6	10	5		6	-20.0%	1.32
EHRlichia EWINGII	0	0	1	0	0	0		0	0.0%	0.00
EHRlichiosis ANAPLASMOSIS UNDETERMINED	0	0	0	0	0	0		0	0.0%	0.00
LYME	1	0	0	1	1	1		1	0.0%	0.26
MALARIA	1	0	1	0	1	0		1	0.0%	0.00
NEUROINVASIVE WEST NILE	0	0	1	1	1	0		1	0.0%	0.00
NON NEUROINVASIVE WEST NILE	0	1	0	0	0	0		0	0.0%	0.00
Q FEVER ACUTE	0	0	0	0	0	0		0	0.0%	0.00
Q FEVER CHRONIC	0	0	0	0	0	0		0	0.0%	0.00
ROCKY MOUNTAIN SPOTTED FEVER	5	7	6	1	7	4		6	-50.0%	1.05
TULAREMIA	1	2	0	0	1	1		1	0.0%	0.26
Vectorborne and Zoonotics Total	13	16	20	10	21	14		16	-14.3%	3.88
Other Conditions										
ANIMAL BITES	304	356	385	387	420	458		385	15.9%	120.69
COCCIDIOIDOMYCOSIS	0	0	0	1	0	0		0	0.0%	0.00
CREUTZFELDT-JAKOB DISEASE (CJD)	0	0	1	0	1	3		0	100.0%	0.79
HEMOLYTIC UREMIC SYNDROME	0	0	2	0	0	0		0	0.0%	0.00
HEPATITIS B (PREGNANCY) PRENATAL	5	6	7	4	10	1		6	-500.0%	0.26
HEPATITIS B ACUTE	2	3	2	3	4	2		3	-50.0%	0.53
HEPATITIS B CHRONIC INFECTION	14	16	10	19	19	13		16	-23.1%	3.43
HEPATITIS C ACUTE	0	0	1	0	0	0		0	0.0%	0.00
HEPATITIS C CHRONIC INFECTION	138	102	153	139	197	138		139	-0.7%	36.36
LTBI	64	100	103	79	64	74		79	-6.8%	19.50
MENINGOCOCCAL DISEASE	1	2	0	2	0	1		1	0.0%	0.26
MOTT	26	42	25	30	35	27		30	-11.1%	7.11
MUMPS	0	0	0	0	0	3		0	100.0%	0.79

EHRlichiosis ANAPLASMOSIS UNDETERMINED	0	0	0	0	0	0	0	0	0	0	0	0
LYME	0	0	0	0	0	0	0	0	0	0	0	0
MALARIA	0	0	0	0	0	0	0	0	0	0	0	0
NEUROINVASIVE WEST NILE	0	0	0	0	0	0	0	0	0	0	0	0
NON NEUROINVASIVE WEST NILE	0	0	0	0	0	0	0	0	0	0	0	0
Q FEVER ACUTE	0	0	0	0	0	0	0	0	0	0	0	0
Q FEVER CHRONIC	0	0	0	0	0	0	0	0	0	0	0	0
ROCKY MOUNTAIN SPOTTED FEVER	0	0	0	2	0	1	0	1	0	0	0	0
TULAREMIA	0	0	0	0	0	1	0	0	0	0	0	0
Other Conditions												
ANIMAL BITES	37	27	38	39	44	41	54	48	41	37	26	26
COCCIDIOIDOMYCOSIS	0	0	0	0	0	0	0	0	0	0	0	0
CREUTZFELDT-JAKOB DISEASE (CJD)	0	0	0	1	1	0	0	0	0	0	1	0
HEMOLYTIC UREMIC SYNDROME	0	0	0	0	0	0	0	0	0	0	0	0
HEPATITIS B (PREGNANCY) PRENATAL	0	0	0	0	0	0	1	0	0	0	0	0
HEPATITIS B ACUTE	0	0	0	0	0	1	0	1	0	0	0	0
HEPATITIS B CHRONIC INFECTION	2	4	2	0	1	1	0	2	0	0	1	0
HEPATITIS C ACUTE	0	0	0	0	0	0	0	0	0	0	0	0
HEPATITIS C CHRONIC INFECTION	8	13	11	12	17	17	15	12	14	9	8	3
LTBI	8	9	2	5	6	4	8	10	7	1	9	7
MENINGOCOCCAL DISEASE	0	0	1	0	0	0	0	0	0	0	0	0
MOTT	0	6	2	6	1	1	1	3	2	2	0	3
MUMPS	0	0	0	0	0	0	0	0	0	0	0	3
PARAGONIMIASIS	0	0	0	0	0	0	0	0	0	0	0	0
RABIES ANIMAL	0	0	0	0	0	0	0	0	0	1	0	0
RABIES POST EXPOSURE PROPHYLAXIS	1	0	1	1	1	7	4	1	2	2	1	2
STAPH AUREUS VISA	0	0	1	0	0	0	1	0	0	1	0	0
TB DISEASE	0	1	0	0	0	0	0	1	0	0	0	0
TOXIC SHOCK (STAPH) SYNDROME	0	0	0	0	0	0	0	0	0	0	0	0
VIBRIOSIS	0	0	0	0	0	0	0	0	1	0	0	0

Enteric Cases per Month 2016



Respiratory Cases per Month 2016

