

**St. Charles County Annual Communicable Disease Report  
Department of Community Health and the Environment  
2015**

**Reportable Conditions: St. Charles County Report Summary**

The data presented below is a summary of the reportable diseases that meet the confirmed and probable Missouri Department of Health and Senior Services case definition (*excluded from this report are Sexually Transmitted Diseases and Influenza. Those can be found in separate reports*). There were a total of 987 confirmed and probable reportable cases in St. Charles County in 2015. This is 10 % increase from the previous 5 year median, of 889.

**Enteric Illnesses:** The 2015 reported enteric cases were statistically similar to the previous 5 year median. The most noteworthy decline was *Cryptosporidiosis* cases. There were 4 cases of *Cryptosporidiosis* in 2015, half of the previous 5 year median. The number of *Giardiasis* cases has been decreasing since 2008 with 9 cases being reported in 2015, the lowest in the past 15 years. We did have an increase in number of cases of *Shigellosis* cases in 2015, this increase is due to an outbreak at a daycare in the fall of 2014 which carried over into 2015.

**Respiratory:** Overall Respiratory illnesses have decreased again in 2015 by 20% from the previous 5 year median. There were 14 cases of Pertussis in 2014, the lowest we have seen since 2007.

**Vectorborne and Zoonotic:** Vectorborne and zoonotic cases were down 30.0% compared to previous 5 year median.

**Tuberculosis and Latent TB Infections (LTBI):** There were 2 cases of active Tuberculosis reported in St. Charles County in 2015. There were 60 LTBI cases in 2015.

	Year to Date Totals: December						Previous YTD 5 Yr Median	% Change From YTD 5 Yr Median	YTD 2015 Rate Per 100000*
	2010	2011	2012	2013	2014	2015			
<b>Enteric, Food and Waterborne</b>									
CAMPYLOBACTERIOSIS	47	56	45	44	37	45	45	0.0%	11.86
CRYPTOSPORIDIOSIS	34	5	12	9	6	4	9	-125.0%	1.05
E COLI SHIGA TOXIN POSITIVE	7	11	11	8	7	13	8	38.5%	3.43
E. COLI O157 H7	7	7	16	10	0	4	7	-75.0%	1.05
GIARDIASIS	17	18	12	12	12	9	12	-33.3%	2.37
HEPATITIS A ACUTE	0	3	0	0	1	0	0	0.0%	0.00
LISTERIOSIS	1	0	0	0	1	0	0	0.0%	0.00
SALMONELLOSIS	54	39	40	55	42	39	42	-7.7%	10.28
SHIGA TOXIN POSITIVE (NON E. COLI, UNK)	0	0	1	0	0	0	0	0.0%	0.00
SHIGELLOSIS	10	4	4	3	30	31	4	87.1%	8.17
YERSINIOSIS	0	0	1	0	0	1	0	100.0%	0.26
<b>Enteric total</b>	<b>177</b>	<b>143</b>	<b>142</b>	<b>141</b>	<b>136</b>	<b>146</b>	<b>142</b>	<b>2.7%</b>	<b>38.47</b>
<b>Respiratory and Direct Contact</b>									
ADULT RESPIRATORY DISTRESS SYNDROME (ARDS)	0	1	0	0	0	0	0	0.0%	0.00
HAEMOPHILUS INFLUENZAE, INVASIVE	2	5	6	4	4	2	4	-100.0%	0.53

LEGIONELLOSIS	2	0	5	4	5	4	4	0.0%	1.05
PERTUSSIS	23	26	60	43	24	14	26	-85.7%	3.69
STREP DISEASE, GROUP A INVASIVE	15	12	6	7	8	13	8	38.5%	3.43
STREP PNEUMONIAE, <5 YEARS, INVASIVE	3	1	1	0	0	2	1	50.0%	0.53
STREP PNEUMONIAE, DRUG-RESISTANT	2	4	6	3	7	5	4	20.0%	1.32
<b>Respiratory Total</b>	<b>47</b>	<b>48</b>	<b>84</b>	<b>61</b>	<b>48</b>	<b>40</b>	<b>48</b>	<b>-20.0%</b>	<b>10.54</b>
<b>Vectorborne and Zoonotics</b>									
ANAPLASMA PHAGOCYTOPHILUM	1	0	1	0	1	0	1	0.0%	0.00
DENGUE FEVER	2	0	1	0	0	0	0	0.0%	0.00
EHRlichia CHAFFEENSIS	6	5	4	11	6	10	6	40.0%	2.64
EHRlichia EWINGII	0	0	0	1	0	0	0	0.0%	0.00
EHRlichiosis ANAPLASMOSIS UNDETERMINED	0	0	0	0	0	0	0	0.0%	0.00
LYME	0	1	0	0	1	0	0	0.0%	0.00
MALARIA	0	1	0	1	0	1	0	100.0%	0.26
NEUROINVASIVE WEST NILE	1	0	0	1	1	1	1	0.0%	0.26
NON NEUROINVASIVE WEST NILE	0	0	1	0	0	0	0	0.0%	0.00
Q FEVER ACUTE	0	0	0	0	0	0	0	0.0%	0.00
Q FEVER CHRONIC	0	0	0	0	0	0	0	0.0%	0.00
ROCKY MOUNTAIN SPOTTED FEVER	4	5	7	5	1	7	5	28.6%	1.84
TULAREMIA	0	1	2	0	0	1	0	100.0%	0.26
<b>Vectorborne and Zoonotics Total</b>	<b>14</b>	<b>13</b>	<b>16</b>	<b>19</b>	<b>10</b>	<b>20</b>	<b>14</b>	<b>30.0%</b>	<b>5.27</b>
<b>Other Conditions</b>									
ANIMAL BITES	413	304	356	385	387	420	385	8.3%	110.67
COCCIDIOIDOMYCOSIS	1	0	0	0	1	0	0	0.0%	0.00
CREUTZFELDT-JAKOB DISEASE (CJD)	0	0	0	1	0	1	0	100.0%	0.26
HEMOLYTIC UREMIC SYNDROME	0	0	0	2	0	0	0	0.0%	0.00
HEPATITIS B (PREGNANCY) PRENATAL	6	5	6	7	4	10	6	40.0%	2.64
HEPATITIS B ACUTE	3	2	3	2	3	4	3	25.0%	1.05
HEPATITIS B CHRONIC INFECTION	7	14	16	10	19	19	14	26.3%	5.01
HEPATITIS C ACUTE	0	0	0	1	0	0	0	0.0%	0.00
HEPATITIS C CHRONIC INFECTION	123	138	102	154	139	202	138	31.7%	53.23
LTBI	71	64	100	103	79	60	79	-31.7%	15.81
MENINGOCOCCAL DISEASE	2	1	2	0	2	0	2	0.0%	0.00
MOTT	30	26	42	25	30	35	30	14.3%	9.22
MUMPS	0	0	0	0	0	0	0	0.0%	0.00
PARAGONIMIASIS	0	0	0	0	0	1	0	100.0%	0.26
RABIES ANIMAL	1	0	0	1	0	1	0	100.0%	0.26
RABIES POST EXPOSURE PROPHYLAXIS	29	17	16	11	10	23	16	30.4%	6.06
STAPH AUREUS VISA	n/a	n/a	n/a	13	11	2	N/A	0.0%	0.53
TB DISEASE	4	1	3	0	4	2	3	-50.0%	0.53
TOXIC SHOCK (STAPH) SYNDROME	0	0	0	0	0	0	0	0.0%	0.00
VIBRIOSIS	0	0	1	1	0	1	0	100.0%	0.26

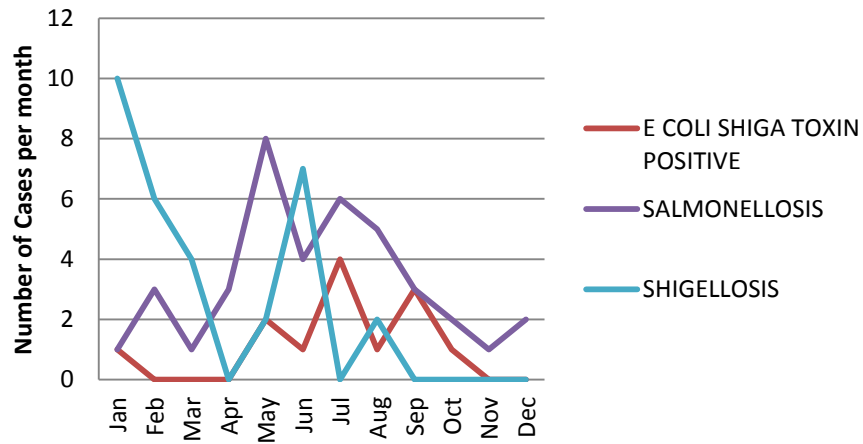
\*United States Census Bureau population estimate for 2014 used for calculation.

**Reportable Cases (Confirmed and Probable) By Month in St. Charles County: 2015**

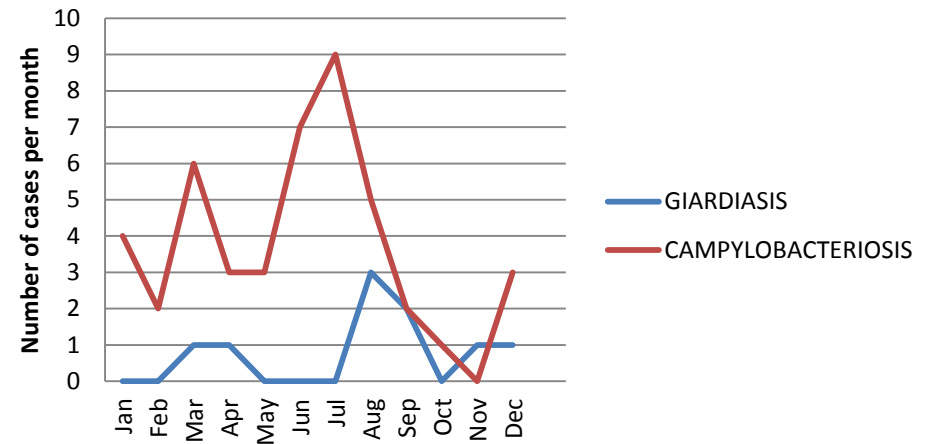
	Jan	Feb	Mar	Apr	May	Jun	Jul	Aug	Sep	Oct	Nov	Dec
<b>Enteric, Food and Waterborne</b>												
CAMPYLOBACTERIOSIS	4	2	6	3	3	7	9	5	2	1	0	3
CRYPTOSPORIDIOSIS	0	0	0	0	0	0	1	2	1	0	0	0
E COLI SHIGA TOXIN POSITIVE	1	0	0	0	2	1	4	1	3	1	0	0
E. COLI O157 H7	1	0	0	0	0	0	1	0	0	0	1	1
GIARDIASIS	0	0	1	1	0	0	0	3	2	0	1	1
HEPATITIS A ACUTE	0	0	0	0	0	0	0	0	0	0	0	0
LISTERIOSIS	0	0	0	0	0	0	0	0	0	0	0	0
SALMONELLOSIS	1	3	1	3	8	4	6	5	3	2	1	2
SHIGA TOXIN POSITIVE (NON E. COLI, UNK)	0	0	0	0	0	0	0	0	0	0	0	0
SHIGELLOSIS	10	6	4	0	2	7	0	2	0	0	0	0
YERSINIOSIS	0	0	0	0	0	0	1	0	0	0	0	0
<b>Respiratory and Direct Contact</b>												
ADULT RESPIRATORY DISTRESS SYNDROME (ARDS)	0	0	0	0	0	0	0	0	0	0	0	0
HAEMOPHILUS INFLUENZAE, INVASIVE	0	0	0	1	0	0	0	0	0	0	0	1
LEGIONELLOSIS	0	0	0	0	0	0	1	1	0	0	0	2
PERTUSSIS	0	0	1	2	1	0	6	2	0	0	2	0
STREP DISEASE, GROUP A INVASIVE	1	0	4	1	0	1	2	0	1	0	1	2
STREP PNEUMONIAE, <5 YEARS, INVASIVE	0	0	1	0	0	0	0	0	0	0	0	1
STREP PNEUMONIAE, DRUG-RESISTANT	0	2	0	0	0	0	0	0	1	1	0	1
<b>Vectorborne and Zoonotics</b>												
ANAPLASMA PHAGOCYTOPHILUM	0	0	0	0	0	0	0	0	0	0	0	0
DENGUE FEVER	0	0	0	0	0	0	0	0	0	0	0	0
EHRlichia CHAFFEENSIS	0	0	0	1	1	2	3	3	0	0	0	0
EHRlichia EWINGII	0	0	0	0	0	0	0	0	0	0	0	0
EHRlichiosis ANAPLASMOSIS UNDETERMINED	0	0	0	0	0	0	0	0	0	0	0	0
LYME	0	0	0	0	0	0	0	0	0	0	1	0
MALARIA	0	0	0	0	0	0	0	1	0	0	0	0

NEUROINVASIVE WEST NILE	0	0	0	0	0	0	0	0	1	0	0	0
NON NEUROINVASIVE WEST NILE	0	0	0	0	0	0	0	0	0	0	0	0
Q FEVER ACUTE	0	0	0	0	0	0	0	0	0	0	0	0
Q FEVER CHRONIC	0	0	0	0	0	0	0	0	0	0	0	0
ROCKY MOUNTAIN SPOTTED FEVER	0	0	0	0	0	0	1	2	3	1	0	0
TULAREMIA	0	0	0	0	0	0	1	0	0	0	0	0
<b>Other Conditions</b>												
ANIMAL BITES	30	20	35	28	36	47	39	30	34	50	29	42
COCCIDIOIDOMYCOSIS	0	0	0	0	0	0	0	0	0	0	0	0
CREUTZFELDT-JAKOB DISEASE (CJD)	0	0	0	0	0	0	0	0	1	0	0	0
HEMOLYTIC UREMIC SYNDROME	0	0	0	0	0	0	0	0	0	0	0	0
HEPATITIS B (PREGNANCY) PRENATAL	0	3	2	1	0	0	0	1	1	0	2	0
HEPATITIS B ACUTE	1	0	0	0	0	1	0	0	0	0	1	1
HEPATITIS B CHRONIC INFECTION	2	5	0	2	2	0	2	0	0	3	2	1
HEPATITIS C ACUTE	0	0	0	0	0	0	0	0	0	0	0	0
HEPATITIS C CHRONIC INFECTION	11	23	14	17	19	17	20	14	29	14	11	13
LTBI	3	3	6	4	5	5	7	5	10	5	3	4
MENINGOCOCCAL DISEASE	0	0	0	0	0	0	0	0	0	0	0	0
MOTT	2	6	1	4	1	2	2	3	4	4	3	3
MUMPS	0	0	0	0	0	0	0	0	0	0	0	0
RABIES ANIMAL	0	0	0	0	0	0	0	0	0	1	0	0
RABIES POST EXPOSURE PROPHYLAXIS	0	0	0	1	0	1	7	2	3	6	2	1
STAPH AUREUS VISA	0	0	0	0	0	0	0	0	1	0	1	0
TB DISEASE	0	0	0	1	0	0	0	0	0	0	0	1
TOXIC SHOCK (STAPH) SYNDROME	0	0	0	0	0	0	0	0	0	0	0	0
VIBRIOSIS	0	0	0	0	0	0	0	0	1	0	0	0

### Enteric Cases per Month 2015



### Enteric Cases per Month 2015



### Vectorborne Cases per Month 2015

