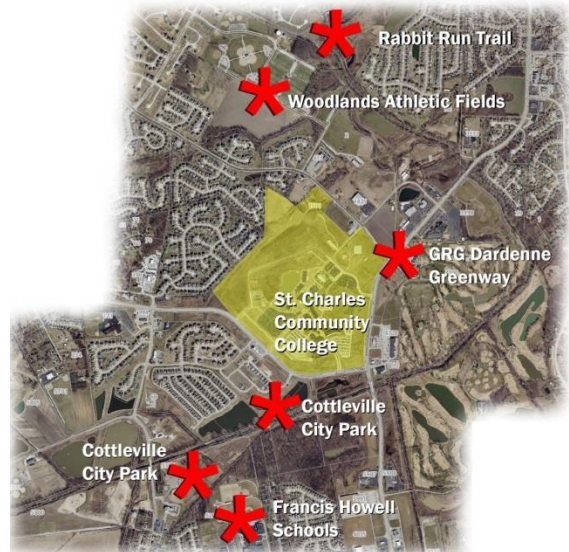


FOR IMMEDIATE RELEASE:

August 8, 2014

Contact: Nancy Lee Gomer, Marketing Coordinator

Phone: 636.949.7535 or cell 636.795.1137



St. Charles County and St. Charles Community College Break New Ground For Park

St. Charles County, Missouri – Together, the St. Charles County Parks and Recreation Department and St. Charles Community College are breaking new ground to make way for College Meadows Park, an 80-acre park development situated on the campus of the college, located at 4601 Mid Rivers Mall Drive, in Cottleville. The community is invited to attend the groundbreaking ceremony that begins at 4:30 p.m. on Monday, Aug. 18. St. Charles County Executive Steve Ehlmann, St. Charles County Parks Director Bettie Yahn-Kramer and St. Charles Community College President Dr. Ron Chesbrough will be the featured speakers at the event and will announce details about the new development and partnership between the parks department and the college.

“Together, we’re breaking new ground to offer the community something different and unique on the undeveloped college property,” said Parks Director Bettie Yahn-Kramer.

Conveniently located, the new park will be designed to accommodate citizens of all ages and abilities. An outdoor fitness trail and a nine-hole disc golf course will be the featured amenities in the park. The fitness trail will encompass 10 pieces of exercise equipment and a fitness machine that is accessible for wheelchairs. The fitness trail will connect to the existing paved walkway on campus as well as nearby greenways and schools. The disc golf course will wind through park meadows and feature concrete tee pads and professional Mach V Disc Golf Baskets.

College Meadows Park is expected to open by the end of 2014.

For more information about St. Charles County Parks, visit www.stccparks.org or contact the St. Charles County Parks and Recreation Department at 636.949.7535.

#