

November 29, 2011

**ADDENDUM #1**

**11-206 Demolition Services**

This Addendum No. 1 contains the following addition to the specifications:

**ASBESTOS**

This addendum provides asbestos survey reports for the subject properties. In the event materials are encountered during demolition that are believed to contain asbestos and that have not been previously identified, demolition is to cease and the County Community Development Department shall be notified.

---

The Bidder shall sign this Addendum acknowledgment and return it with the bid.

**BID ADDENDUM**

**Addendum #1**

Dated \_\_\_\_\_

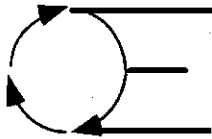
We, the undersigned, acknowledge the receipt of the above addendum(s) as dated.

By: \_\_\_\_\_

Title: \_\_\_\_\_

Company: \_\_\_\_\_

Date: \_\_\_\_\_

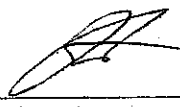


# OLYMPIC Environmental Incorporated

320 Brooks Drive Suite 210 Hazelwood, MO 63042 (314) 895-9982 Fax (314) 895-9958

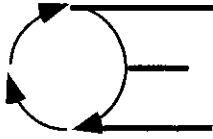
Client :St. Charles County Government  
201 North Second Street  
St. Charles, MO 63301  
Client Proj. No.: NA  
Project No.: 11/4059  
Location: 107 Dardenne Dr.  
St. Charles, MO 63301

Date Sampled: 10/19/11  
Date Received: 10/19/11  
Date Reported: 10/19/11  
AIHA (BAPAT) 101229

  
Timothy St. Peter - Analyst  
Laboratory Director

Lab No.	Sample Number	Sample Description	Percent Asbestos
114059-1	1-1	Shingles (Non Friable) 800 Sqft	No ACM Found Paper, Synthetic, & Non Fibrous Material
114059-2	1-2	Shingles	No ACM Found Paper, Synthetic, & Non Fibrous Material
114059-3	1-3	Shingles	No ACM Found Paper, Synthetic, & Non Fibrous Material
114059-4	2-1	Window Caulk (Friable) 120 Lnft	No ACM Found Paper, & Non Fibrous Material
114059-5	2-2	Window Caulk	No ACM Found Paper, & Non Fibrous Material
114059-6	2-3	Window Caulk	No ACM Found Paper, & Non Fibrous Material
114059-7	3-1	Batt Insulation (Friable) Bath 1800 Sqft	No ACM Found Paper, Fiberglass, & Non Fibrous Material

Vinyl floor tile may contain milled asbestos with fiber lengths of 1 micrometer or less. These fibers may not be detected by PLM and may yield a false negative. TEM analysis may be considered.



# OLYMPIC Environmental Incorporated

320 Brooks Drive Suite 210 Hazelwood, MO 63042 (314) 895-9982 Fax (314) 895-9958

Client :St. Charles County Government  
201 North Second Street  
St. Charles, MO 63301

Client Proj. No.: NA

Project No.: 11/4059

Location: 107 Dardenne Dr.

St. Charles, MO 63301

Date Sampled: 10/19/11

Date Received: 10/19/11

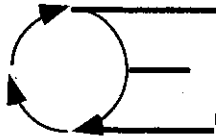
Date Reported: 10/19/11

AIHA (BAPAT) 101229

Timothy St. Peter - Analyst  
Laboratory Director

Lab No.	Sample Number	Sample Description	Percent Asbestos
114059-8	3-2	Batt Insulation	No ACM Found Paper, Fiberglass, & Non Fibrous Material
114059-9	3-3	Batt Insulation	No ACM Found Paper, Fiberglass, & Non Fibrous Material
114059-10	4-1	Blown Insulation (Friable) Attic 750 Sqft	No ACM Found Paper, & Non Fibrous Material
114059-11	4-2	Blown Insulation	No ACM Found Paper, & Non Fibrous Material
114059-12	4-3	Blown Insulation	No ACM Found Paper, & Non Fibrous Material
114059-13	5-1	Tarpaper (Friable) Beneath Siding 850 Sqft	No ACM Found Paper, & Non Fibrous Material
114059-14	5-2	Tarpaper	No ACM Found Paper, & Non Fibrous Material

Vinyl floor tile may contain milled asbestos with fiber lengths of 1 micrometer or less. These fibers may not be detected by PLM and may yield a false negative. TEM analysis may be considered.



# OLYMPIC Environmental Incorporated

320 Brooks Drive Suite 210 Hazelwood, MO 63042 (314) 895-9982 Fax (314) 895-9958

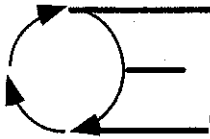
Client :St. Charles County Government  
201 North Second Street  
St. Charles, MO 63301  
Client Proj. No.: NA  
Project No.: 11/4059  
Location: 107 Dardenne Dr.  
St. Charles, MO 63301

Date Sampled: 10/19/11  
Date Received: 10/19/11  
Date Reported: 10/19/11  
AIHA (BAPAT) 101229

Timothy St. Peter - Analyst  
Laboratory Director

Lab No.	Sample Number	Sample Description	Percent Asbestos
114059-15	5-2	Tarpaper	No ACM Found Paper, & Non Fibrous Material
114059-16	6-1a	Drywall – Jt. Compound (Friable) Living Rm 2600 Sqft	No ACM Found Paper, Cellulose, & Non Fibrous Material
114059-17	6-1b	Drywall – Gyp Board Living Rm	No ACM Found Paper, Gypsum, Talc, & Non Fibrous Material
114059-18	6-2a	Drywall – Jt. Compound Kitchen	No ACM Found Paper, Cellulose, & Non Fibrous Material
114059-19	6-2b	Drywall – Gyp Board Kitchen	No ACM Found Paper, Gypsum, Talc, & Non Fibrous Material
114059-20	6-3a	Drywall – Jt. Compound Dining Rm	No ACM Found Paper, Cellulose, & Non Fibrous Material
114059-21	6-3b	Drywall – Gyp Board Dining Rm	No ACM Found Paper, Gypsum, Talc, & Non Fibrous Material

Vinyl floor tile may contain milled asbestos with fiber lengths of 1 micrometer or less. These fibers may not be detected by PLM and may yield a false negative. TEM analysis may be considered.



# OLYMPIC Environmental Incorporated

320 Brooks Drive Suite 210 Hazelwood, MO 63042 (314) 895-9982 Fax (314) 895-9958

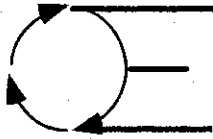
Client :St. Charles County Government  
201 North Second Street  
St. Charles, MO 63301  
Client Proj. No.: NA  
Project No.: 11/4059  
Location: 107 Dardenne Dr.  
St. Charles, MO 63301

Date Sampled: 10/19/11  
Date Received: 10/19/11  
Date Reported: 10/19/11  
AIHA (BAPAT) 101229

Timothy St. Peter - Analyst  
Laboratory Director

Lab No.	Sample Number	Sample Description	Percent Asbestos
114059-22	7-1	Transite Siding (Non Friable) 850 Sqft	40-43% Chrysotile Paper, & Non Fibrous Material
114059-23	7-2	Transite Siding	Not Analyzed
114059-24	7-3	Transite Siding	Not Analyzed

Vinyl floor tile may contain milled asbestos with fiber lengths of 1 micrometer or less. These fibers may not be detected by PLM and may yield a false negative. TEM analysis may be considered.




# OLYMPIC Environmental Incorporated

320 Brooks Drive Suite 210 Hazelwood, MO 63042 (314) 895-9982 Fax (314) 895-9958

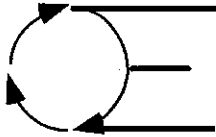
Client :St. Charles County Government  
201 North Second Street  
St. Charles, MO 63301  
Client Proj. No.: NA  
Project No.: 11/4059  
Location: 196 Dardenne Dr.  
St. Charles, MO 63301

Date Sampled: 10/19/11  
Date Received: 10/19/11  
Date Reported: 10/19/11  
AIHA (BAPAT) 101229

  
Timothy St. Peter - Analyst  
Laboratory Director

Lab No.	Sample Number	Sample Description	Percent Asbestos
114059-25	1-1	Shingles (Non Friable) 700 Sqft	No ACM Found Paper, Synthetic, & Non Fibrous Material
114059-26	1-2	Shingles	No ACM Found Paper, Synthetic, & Non Fibrous Material
114059-27	1-3	Shingles	No ACM Found Paper, Synthetic, & Non Fibrous Material
114059-28	2-1	Window Caulk (Non Friable) 100 Lnft	No ACM Found Paper, & Non Fibrous Material
114059-29	2-2	Window Caulk	No ACM Found Paper, & Non Fibrous Material
114059-30	2-3	Window Caulk	No ACM Found Paper, & Non Fibrous Material
114059-31	3-1	Linoleum Debris (Friable) Entry 300 Sqft	No ACM Found Paper, & Non Fibrous Material

Vinyl floor tile may contain milled asbestos with fiber lengths of 1 micrometer or less. These fibers may not be detected by PLM and may yield a false negative. TEM analysis may be considered.



# OLYMPIC Environmental Incorporated

320 Brooks Drive Suite 210 Hazelwood, MO 63042 (314) 895-9982 Fax (314) 895-9958

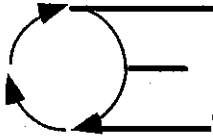
Client :St. Charles County Government  
201 North Second Street  
St. Charles, MO 63301  
Client Proj. No.: NA  
Project No.: 11/4059  
Location: 196 Dardenne Dr.  
St. Charles, MO 63301

Date Sampled: 10/19/11  
Date Received: 10/19/11  
Date Reported: 10/19/11  
AIHA (BAPAT) 101229

Timothy St. Peter - Analyst  
Laboratory Director

Lab No.	Sample Number	Sample Description	Percent Asbestos
114059-32	3-2	Linoleum Debris Kitchen	No ACM Found Paper, & Non Fibrous Material
114059-33	3-3	Linoleum Debris	No ACM Found Paper, & Non Fibrous Material
114059-34	4-1	Batt Insulation (Friable) 200 Sqft	No ACM Found Paper, Fiberglass, & Non Fibrous Material
114059-35	4-2	Batt Insulation	No ACM Found Paper, Fiberglass, & Non Fibrous Material
114059-36	4-3	Batt Insulation	No ACM Found Paper, Fiberglass, & Non Fibrous Material
114059-37	5-1	Blown Insulation (Friable) Attic 600 Sqft	No ACM Found Paper, & Non Fibrous Material
114059-38	5-2	Blown Insulation	No ACM Found Paper, & Non Fibrous Material

Vinyl floor tile may contain milled asbestos with fiber lengths of 1 micrometer or less. These fibers may not be detected by PLM and may yield a false negative. TEM analysis may be considered.



# OLYMPIC Environmental Incorporated

320 Brooks Drive Suite 210 Hazelwood, MO 63042 (314) 895-9982 Fax (314) 895-9958

Client :St. Charles County Government  
201 North Second Street  
St. Charles, MO 63301  
Client Proj. No.: NA  
Project No.: 11/4059  
Location: 196 Dardenne Dr.  
St. Charles, MO 63301

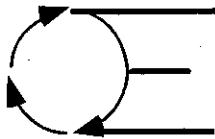
Date Sampled: 10/19/11  
Date Received: 10/19/11  
Date Reported: 10/19/11  
AIHA (BAPAT) 101229

Timothy St. Peter - Analyst  
Laboratory Director

Lab No.	Sample Number	Sample Description	Percent Asbestos
114059-39	5-3	Blown Insulation	No ACM Found Paper, & Non Fibrous Material
114059-40	6-1a	Drywall – Jt. Compound (Friable) 800 Sqft	No ACM Found Paper, Cellulose, & Non Fibrous Material
114059-41	6-1b	Drywall – Gyp Board	No ACM Found Paper, Gypsum, Talc, & Non Fibrous Material
114059-42	6-2a	Drywall – Jt. Compound	No ACM Found Paper, Cellulose, & Non Fibrous Material
114059-43	6-2b	Drywall – Gyp Board	No ACM Found Paper, Gypsum, Talc, & Non Fibrous Material
114059-44	6-3a	Drywall – Jt. Compound	No ACM Found Paper, Cellulose, & Non Fibrous Material
114059-45	6-3b	Drywall – Gyp Board	No ACM Found Paper, Gypsum, Talc, & Non Fibrous Material

Vinyl floor tile may contain milled asbestos with fiber lengths of 1 micrometer or less. These fibers may not be detected by PLM and may yield a false negative. TEM analysis may be considered.





# OLYMPIC Environmental Incorporated

320 Brooks Drive Suite 210 Hazelwood, MO 63042 (314) 895-9982 Fax (314) 895-9958

Client :St. Charles County Government  
201 North Second Street  
St. Charles, MO 63301  
Client Proj. No.: NA  
Project No.: 11/4059  
Location: 196 Dardenne Dr.  
St. Charles, MO 63301

Date Sampled: 10/19/11  
Date Received: 10/19/11  
Date Reported: 10/19/11  
AIHA (BAPAT) 101229

Timothy St. Peter - Analyst  
Laboratory Director

Lab No.	Sample Number	Sample Description	Percent Asbestos
114059-46	7-1	Texture (Friable) 600 Sqft	No ACM Found Paper, Cellulose, & Non Fibrous Material
114059-47	7-2	Texture	No ACM Found Paper, Cellulose, & Non Fibrous Material
114059-48	7-3	Texture	No ACM Found Paper, Cellulose, & Non Fibrous Material
114059-49	8-1	Transite (Non Friable) 1000 Sqft	20-25% Chrysotile Paper, & Non Fibrous Material
114059-50	8-2	Transite	Not Analyzed
114059-51	8-3	Transite	Not Analyzed

Vinyl floor tile may contain milled asbestos with fiber lengths of 1 micrometer or less. These fibers may not be detected by PLM and may yield a false negative. TEM analysis may be considered.