

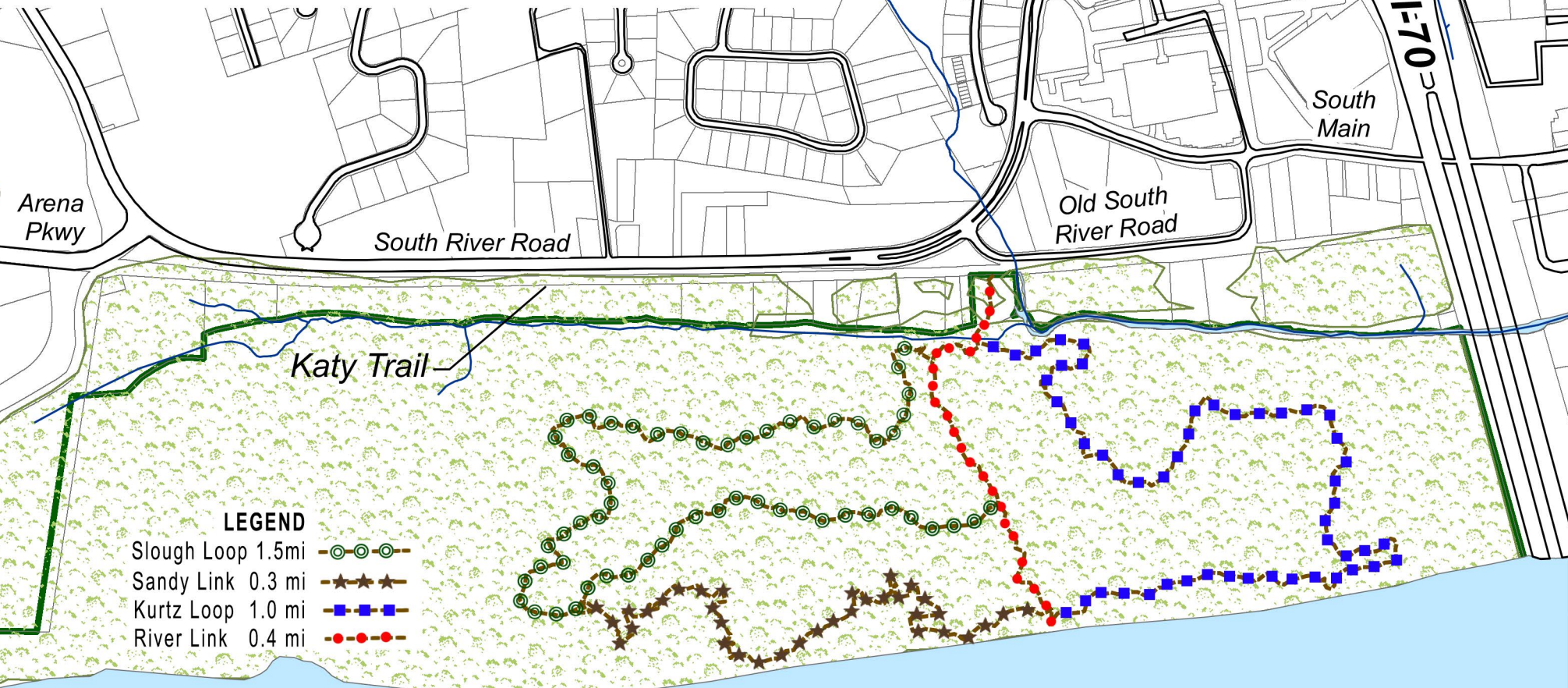
Bangert Island  
1704 S. River Road  
St. Charles, MO 63303

Bangert Island is  
160 acres in size.

Directions:  
From I-70 go south on  
Fifth St./S. River Rd.  
for 0.5 mi. Turn left on  
Old South River Rd. to  
entrance (along Katy Trail).

Trail Closure Info:  
(636) 707-0011

To sign-up for alerts or  
use the free app click  
on **Rainout Line**  
at [www.stccparks.org](http://www.stccparks.org)



**LEGEND**

- Slough Loop 1.5mi 
- Sandy Link 0.3mi 
- Kurtz Loop 1.0mi 
- River Link 0.4mi 

MISSOURI RIVER



Scan QR Code  
To View Map  
or visit [stccmo.org](http://stccmo.org)



**St. Charles County  
Bangert Island**

St. Charles County Parks, 201 N. Second St., S. 510, St. Charles, MO, 63301 636.949.7535 [www.stccparks.org](http://www.stccparks.org)

